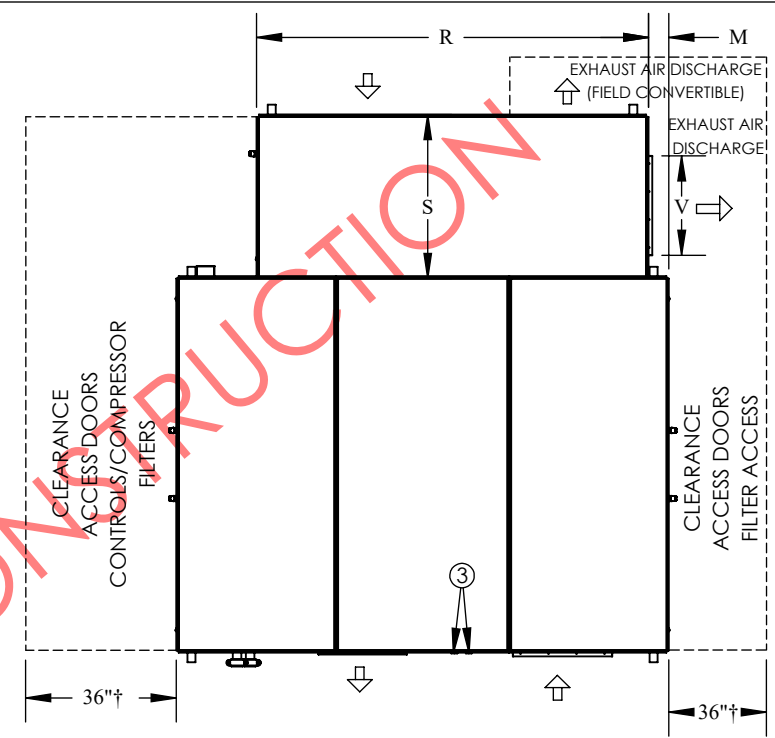
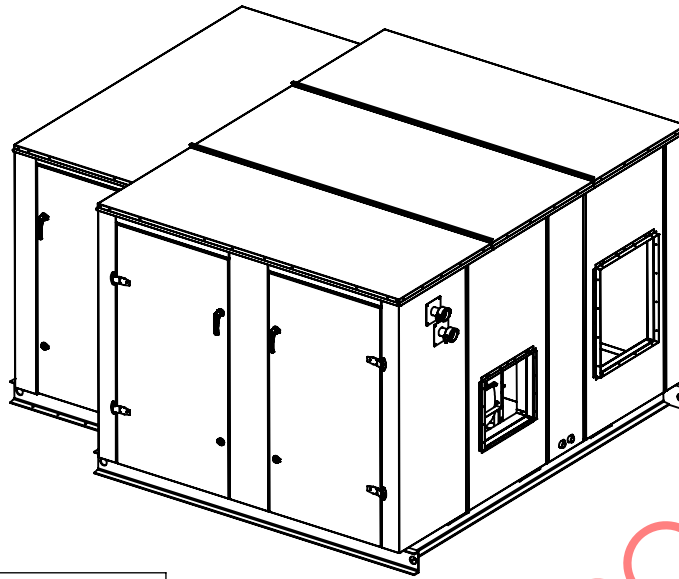


- ① FLUID IN
  - ② FLUID OUT
  - ③ CONDENSATE DRAIN x 2 (1 1/2")
  - ④ SUGGESTED AREA FOR ELECTRICAL CONNECTION
- DISCLAIMER: DO NOT COVER UNIT NAMEPLATE WHILE MAKING THIS CONNECTION*

**REMARKS**

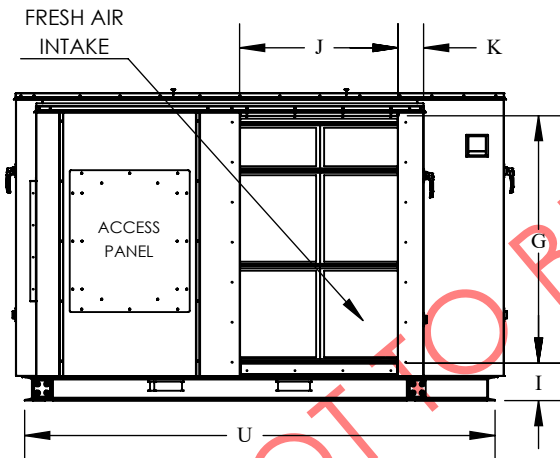
1. FILTERS ARE AS FOLLOWS  
 MERV8 PREFILTERS, 12"x24"x2" (QTY:3)  
 MERV8 PREFILTERS, 24"x24"x2" (QTY:3)  
 MERV13 BAG FILTERS, 12"x24"x2" (QTY:3)  
 MERV13 BAG FILTERS, 24"x24"x15" (QTY: 3)  
 MERV8 EXHAUST FILTERS, 12"x24"x2" (QTY: 3)  
 MERV8 EXHAUST FILTERS, 24"x24"x2" (QTY: 3)
2. † MINIMUM CLEARANCE FOR SERVICE  
*DISCLAIMER: MINIMUM CLEARANCE IS NOT ENOUGH FOR HEAT WHEEL REPLACEMENT*



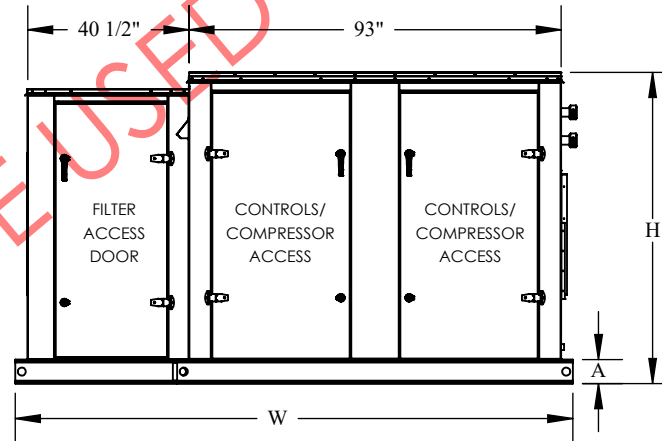
**TOP VIEW**

CAPACITY (TONS)	WATER PIPE CONNECTIONS*	CONNECTION TYPES
5-10	1.25" (10 GPM - 20 GPM)	FEMALE THREADS
12-15	1.5" (24 GPM - 30 GPM)	FEMALE THREADS
18-30	2" (36 GPM - 60 GPM)	GROOVED**

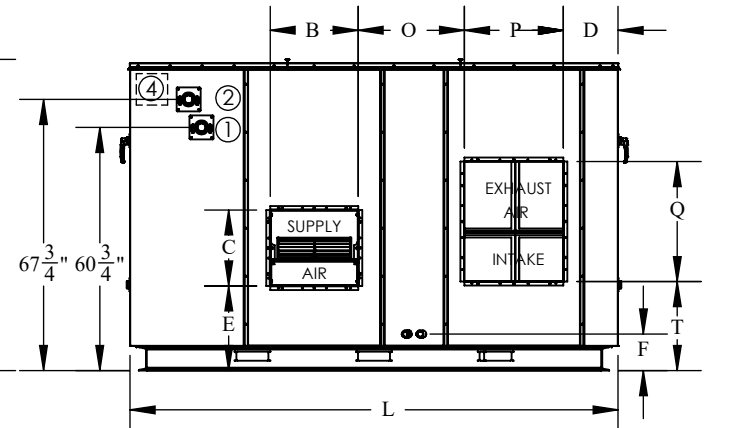
\* Based On 2 GPM/Ton  
 \*\* Mechanical grooved coupling supplied by manufacturer



**LEFT VIEW**



**FRONT VIEW**



**RIGHT VIEW**

H	W	L	A	B	C	D	E	F	G	I	J	K	M	N	O	P	Q	R	S	T	U	V
77 3/4"	139 3/8"	122"	6"	22"	19"	13 5/8"	21 1/8"	9 1/8"	61 7/8"	9 3/8"	39 5/8"	6 3/8"	5 1/2"	25 3/4"	26 5/8"	24 3/4"	30"	98"	41"	22 1/4"	117 5/8"	24 7/8"

NAME:	DATE (MM/DD/YYYY):	TITLE:	VARIPAK WITH ENERGY RECOVERY WHEEL SIZE 5 (INDOOR)
DRAWN BY:	AD	11/3/2021	HORIZONTAL INTAKE & SUPPLY
CHECKED BY:	FS	11/3/2021	HORIZONTAL EXHAUST IN
		HORIZONTAL EXHAUST DISCHARGE	
		UNIT MODEL:	VPWA5XX
<small>THE INFORMATION CONTAINED IN THIS DRAWING IS THE SOLE PROPERTY OF CGC GROUP. ANY REPRODUCTION IN PART OR AS A WHOLE WITHOUT THE WRITTEN PERMISSION OF CGC GROUP IS PROHIBITED.</small>		SCALE:	NTS
		SHEET 1 OF 1	