

Detailed Overview of the InnKeeper/HomeKeeper Vertical Stack

IKV008-018 (¾ - 1½ Tons)

HKV016-036 (1¼ - 3 Tons)



Features of the Bulldog Vertical Stack Model

IKV008-018/HKV016-036

- Removing the need for studs results in the smallest footprint
- No maintenance required in the suite
- Enhanced IAQ with no standing water and S.S. drain pan
- QuickShip cabinets and risers available
- Fresh air connection directly to the cabinet
- Choice of front panel design available
- Easy to install riser bundles available
- Lowest sound levels in the industry during the heating mode and very quiet in the cooling mode
- Side and rear return air option for both inlet and outlet
- Integral ERV option
- Condensate drain clearly visible
- 100% self contained chassis ensures replacement in minutes and guarantees continued occupant comfort and no maintenance required in the suite

Standard on all Bulldog Units

- Hybrid Heat Pump with no reversing valves
- Hydronic heat
- Unit mounted microprocessor with safeties and diagnostics
- Factory mounted Demand Flow and Auto Flow valves optional
- Exceed ASHRAE 90.1 efficiency rating
- Quiet operation (Fan Coil sound levels in the heating mode)
- Special compressor isolation prevents 90% of vibration transmission
- Stainless Steel drain pan
- HFC-410A
- Optimum efficiency at 2 USgpm/ton



IKV/HKV Heating and Cooling Capacities

Heating Capacities in Btu/h

InnKeeper Vertical Stack (IKV008-018)

PSC Motors					
Unit Model	IKV008	IKV010	IKV012	IKV015	IKV018
Nominal Air Flow (CFM)	259	323	410	448	464
EWT 100°F	6,560	7,837	9,083	9,669	10,083
EWT 105°F	7,653	9,143	10,597	11,281	11,764
EWT 110°F	8,747	10,449	12,111	12,892	13,444
EWT 120°F	10,933	13,062	15,139	16,115	16,805

With EAT of 70°F and 2 USgpm/ton

Heating Capacities in Btu/h

InnKeeper Vertical Stack (IKV008-018)

HomeKeeper Vertical Stack (HKV016-036)

EC Motors								
Unit Models	IKV008	IKV010	IKV012	HKV016	HKV020	HKV024	HKV030	HKV036
Nominal Air Flow (CFM)	280	320	360	500	600	700	900	1080
EWT 100°F	6,882	7,799	8,405	12,600	14,906	16,471	19,349	21,954
EWT 105°F	8,029	9,099	9,806	14,700	17,391	19,216	22,574	25,613
EWT 110°F	9,176	10,399	11,207	16,800	19,875	21,962	25,799	29,272
EWT 120°F	11,470	12,999	14,009	21,000	24,844	27,452	32,249	36,590

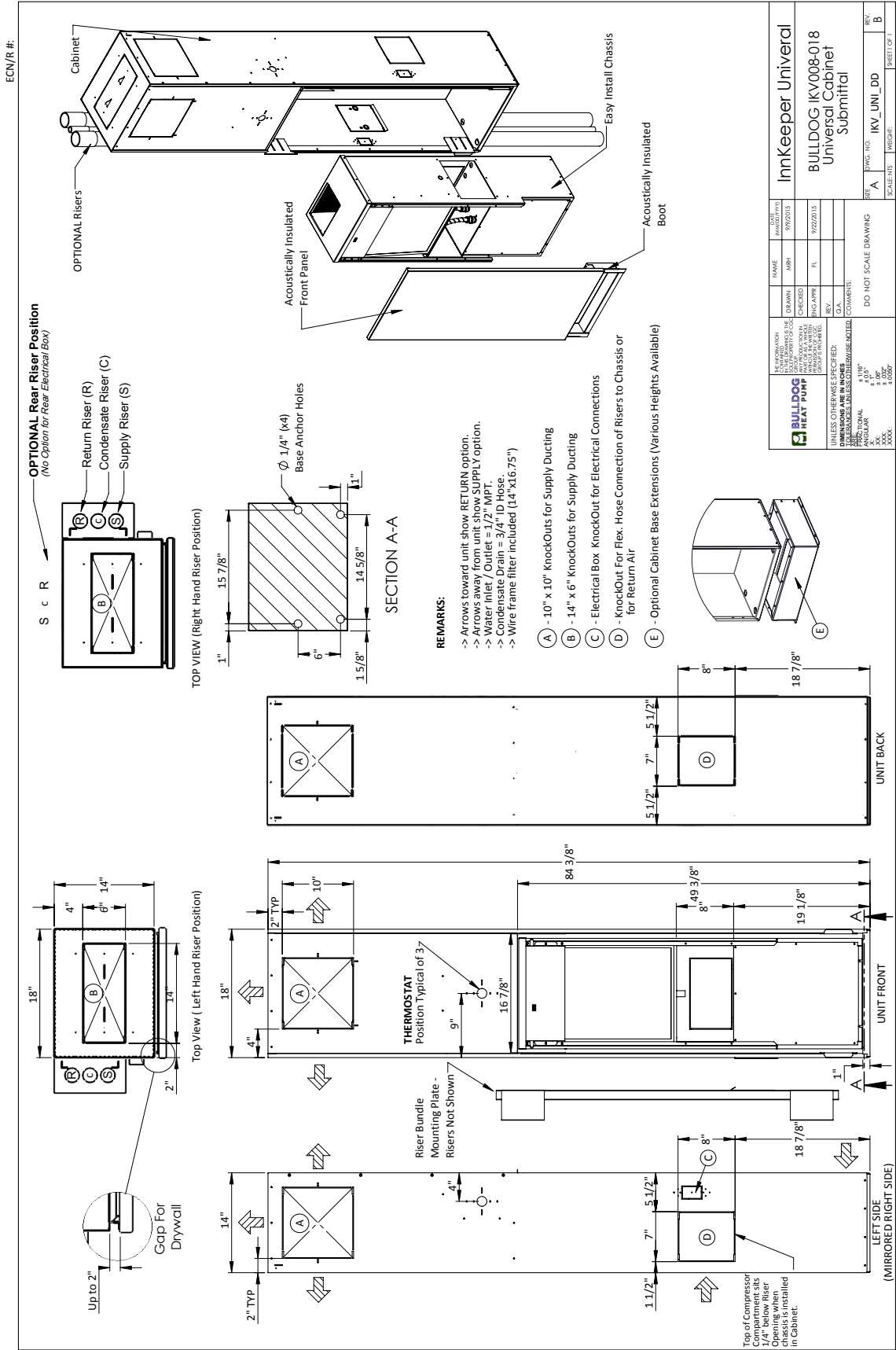
With EAT of 70°F and 2 USgpm/ton

	Model	Water Loop Heat Pump	
		Cooling EWT 86°F	
		Capacity (Btu/h)	EER (Btuh/W)
InnKeeper (IKV)	IKV008	8,511	14.70
	IKV010	9,374	13.90
	IKV012	11,498	13.20
	IKV015*	14,559	14.50
	IKV018*	14,876	12.90
HomeKeeper (HKV)	HKV016	15,176	15.10
	HKV020	18,229	16.10
	HKV024	24,121	14.90
	HKV030	27,305	15.50
	HKV036	32,043	15.00

Cooling capacities based upon EAT 80.6°F (26°C) DB / 66.2°F (19°C) WB, and EWT 86°F (30°C) * PSC motors for IKV015 & 018, all others have ECM Cooling capacity and efficiency rated in accordance with ISO 13256-1



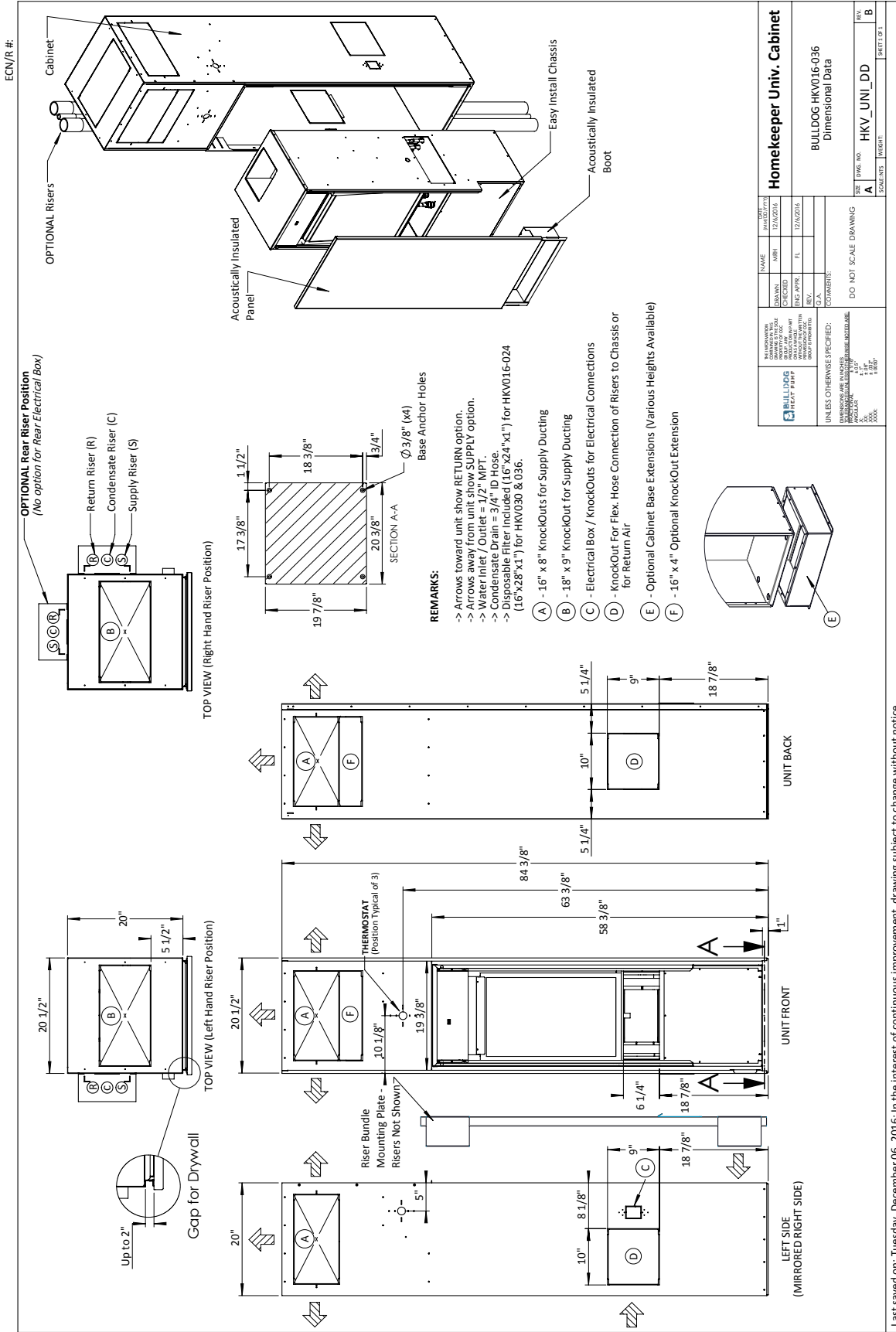
Bulldog InnKeeper Drawing



BULLDOG HEAT PUMP <small>UNLESS OTHERWISE SPECIFIED, DIMENSIONS ARE IN INCHES UNLESS INDICATED OTHERWISE. ANGULAR DIMENSIONS: 1/4" 1/8" 1/16" 1/32" 1/64" 1/128" 1/256" 1/512" 1/1024" 1/2048"</small>	DATE: 9/9/2015 NAME: INNKeeper Universal MODEL: BULLDOG IKV008-018 CHECKED: SINGAPORE FL: 9222013 REV: 1 DRAWN: SINGAPORE FL: 9222013 REV: 1	TITLE: InnKeeper Universal PROJECT: BULLDOG IKV008-018 DRAWING: Universal Cabinet Submittal	SHEET: A DWG. NO.: IKV_UNL_DD SCALE: 1:1 WEIGHT: 1 SHEET OF: 1 REV: B
	COMMENTS: DO NOT SCALE DRAWING		

Last saved on: April-25-16; In the interest of continuous improvement, drawing subject to change without notice.

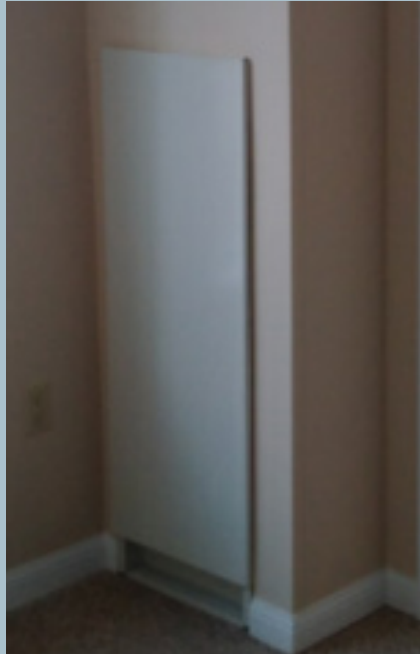
Bulldog HomeKeeper Drawing



Last saved on: Tuesday, December 06, 2016; in the interest of continuous improvement, drawing subject to change without notice.

Panel Installation

Standard Panel



Optional Panel

