



## InnKeeper & HomeKeeper Vertical Stack E-Series

High Efficiency IEV008-012 ( $\frac{3}{4}$  - 1 Ton)  
High Efficiency HEV016-036 ( $1\frac{1}{4}$  - 3 Tons)



## Features of the InnKeeper & HomeKeeper E-Series

### IEV Models 008-012 & HEV Models 016-036

- No maintenance required in the suite
- Side and rear return air option
- Condensate drain clearly visible
- Enhanced IAQ with no standing water and S.S. drain pan
- Removing the need for studs results in the smallest footprint
- Fresh air connection directly to the cabinet
- Easy to install riser bundles available
- 100% self contained chassis ensures replacement in minutes and guarantees continued occupant comfort
- Lowest sound levels in the industry during the heating mode
- Also very quiet in the cooling mode
- Integral ERV option
- QuickShip cabinets and risers available
- Standard factory mounted demand flow, auto flow valve and EC motors
- Higher EERs

### Standard on all Bulldog Units

- Hybrid Heat Pump with no reversing valves
- Hydronic heat
- Unit mounted microprocessor with safeties and diagnostics
- Optimum efficiency at 2 USgpm/ton
- Quiet operation (Fan Coil sound levels in the heating mode)
- Special compressor isolation prevents 90% of vibration transmission
- Stainless Steel drain pan
- HFC-410A



# IEV/HEV Heating and Cooling Capacities

## Heating Capacities in BTU/h

### InnKeeper Vertical Stack E-Series (IEV008-012)

### HomeKeeper Vertical Stack E-Series (HEV016-036)

EC Motors								
Unit Model	IEV008	IEV010	IEV012	HEV016	HEV020	HEV024	HEV030	HEV036
Nominal Air Flow (CFM)	280	320	360	500	600	720	900	1080
EWT 100°F	6,882	7,799	8,405	12,600	14,906	16,471	19,349	21,954
EWT 105°F	8,029	9,099	9,806	14,700	17,391	19,216	22,574	25,613
EWT 110°F	9,176	10,399	11,207	16,800	19,875	21,962	25,799	29,272
EWT 120°F	11,470	12,999	14,009	21,000	24,844	27,452	32,249	36,590

With EAT of 70°F and 2 USgpm/ton

	Model	Water Loop Heat Pump	
		Cooling EWT 86°F	
		Capacity (Btu/h)	EER (Btuh/W)
InnKeeper E-Series IEV	IEV008	9,006	15.60
	IEV010	9,950	14.60
	IEV012	12,407	14.30
HomeKeeper E-Series HEV	HEV016	18,888	17.60
	HEV020	19,786	18.70
	HEV024	24,500	17.60
	HEV030	29,728	17.40
	HEV036	37,808	16.80

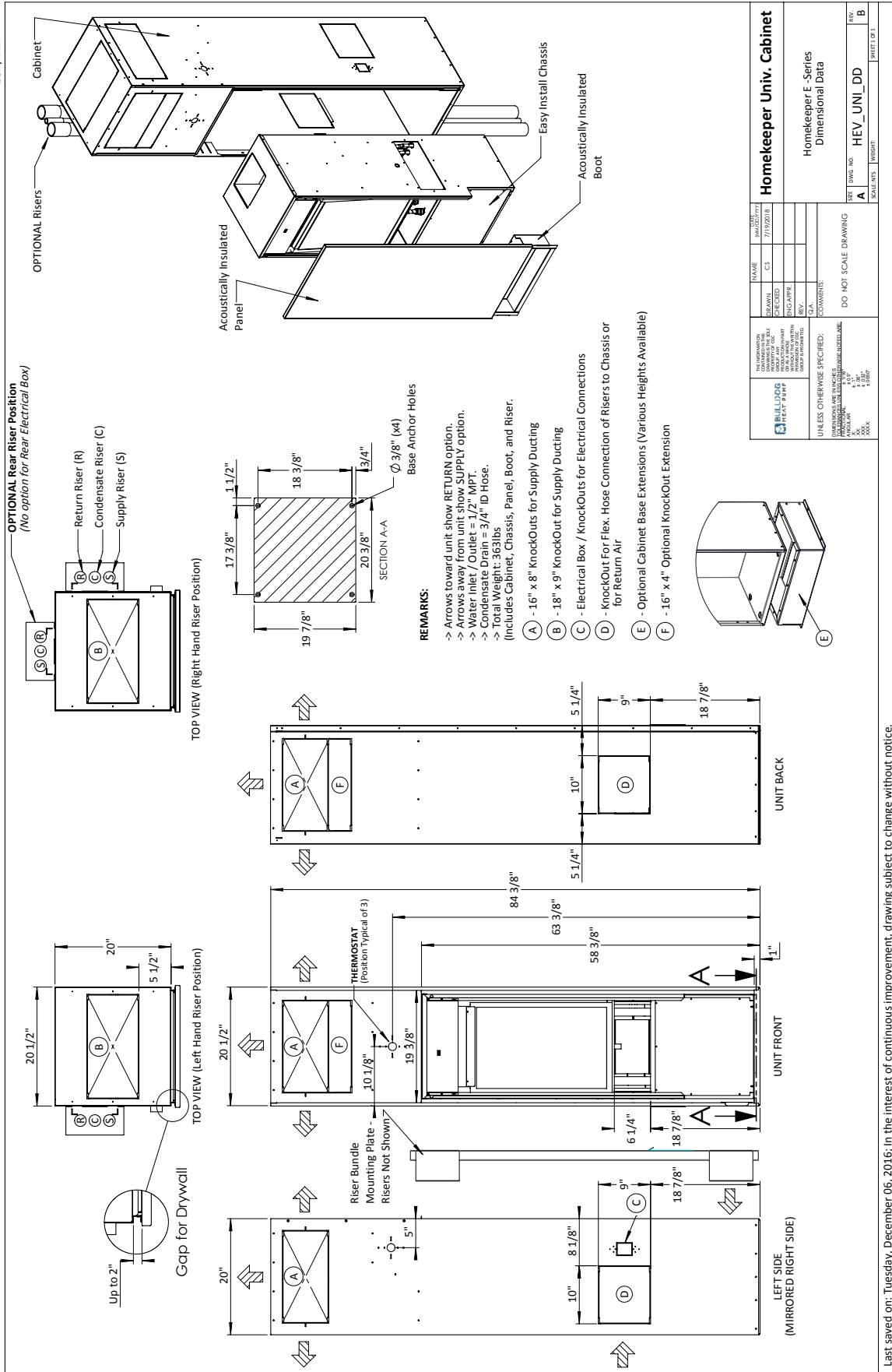
Cooling capacities based upon EAT 80.6°F (26°C) DB / 66.2°F (19°C) WB, and EWT 86°F (30°C) \* Fan Motors are EC type

Cooling capacity and efficiency rated in accordance with ISO 13256-1





# Bulldog HomeKeeper E-Series Drawing

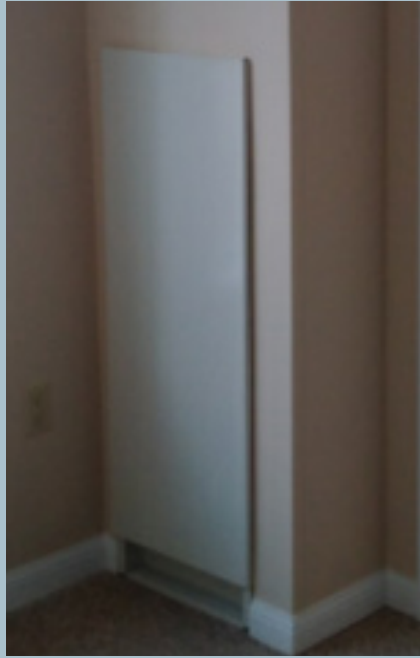


<b>HomeKeeper Univ. Cabinet</b> HomeKeeper E-Series Dimensional Data	
NAME	DATE
CS	7/12/2018
DESIGNER	ENGINEER
CHECKED	REV.
BY	DATE
CONTRACT	
DO NOT SCALE DRAWING	
SCALE	NO. OF SHEETS
A	B
REV.	REV.
HEV_UNI_DD	
SHEET 1 OF 1	

Last saved on: Tuesday, December 06, 2016; In the interest of continuous improvement, drawing subject to change without notice.

# Panel Installation

Standard Panel



Optional Panel

