



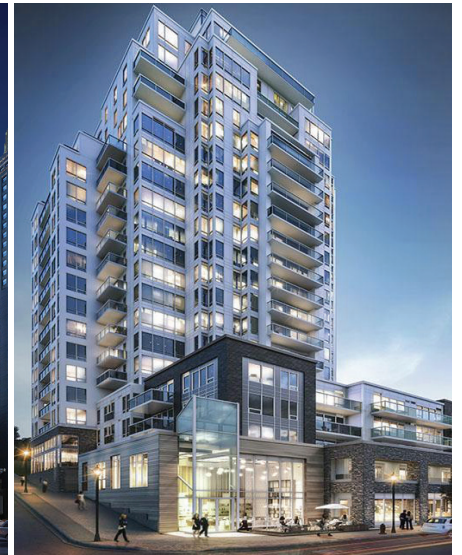
Seaport Square, Boston, MA



9 Dekalb, Brooklyn, NY



200 N Michigan Avenue, Chicago, IL



The Alexander, Halifax, NS

No other heat pump does more, with less.



What does it mean to have a **BULLDOG** heat pump?



InnKeeper/HomeKeeper (IKV/HKV)



KlassKeeper (KKV)



SideWinder (SDW)



SpaceKeeper Horizontal (SKV)



SlimKeeper (SLK)



SpaceKeeper Vertical (SKV)

It means with BULLDOG you get a heat pump that works harder, longer, with less hassle and energy than any other heat pump on the market.



Bulldog is Built North America Strong



Our manufacturing facility is located in Southern Ontario - just an hours drive from Toronto. It's 66,000 square feet of highly efficient departments to produce our high quality product lines; the Bulldog Heat Pump and the Compax Modular Chillers.

**We are committed to the environment!
Solar panels on the roof and low watt LED
lighting fixtures throughout the entire facility.**



Why should you use a Bulldog Heat Pump System?

Because a Hydronic Heating system offers design flexibility and benefits that a reversing WSHP doesn't.

- Quieter
- Uses less electricity
- Has lower failure rates
- Better heat sharing capability
- Modulating heat
- Fewer moving parts
- More reliable
- 40-70% lower heating costs

Because a compressor that doesn't operate...

- Doesn't make any noise
- Lasts longer
- Doesn't consume any power
- Doesn't fail
- Has lower operating costs

A Bulldog system delivers benefits for the building owner, the occupants, and the budget.

- Dry Cooler capability
- Smaller footprint
- Dehumidification
- Fresh air delivered directly to occupied space
- Low flow rate
- Fewer water loops
- Chassis change out in minutes
- Smaller emergency generator



All of our units go through a 7 step quality testing process.....

1. Gross Test in Brazing

2. High Pressure Test

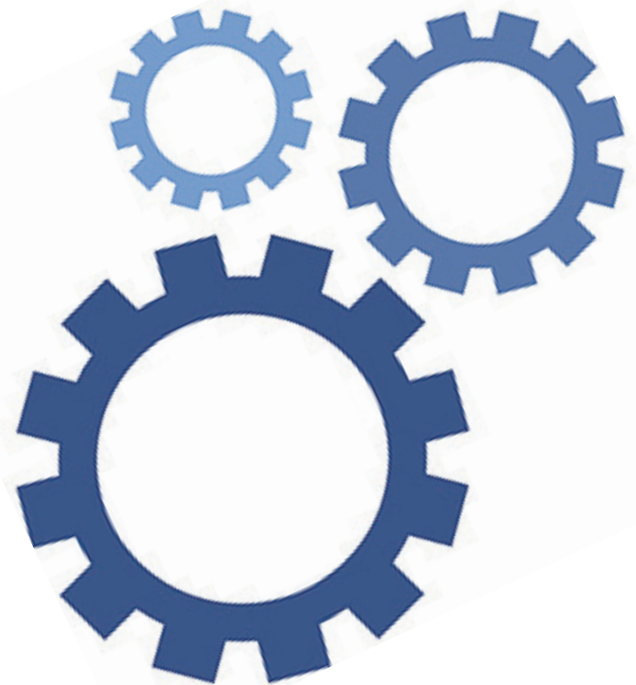
3. Leak Test Station

4. Vacuum System

5. Automatic Fill Station

6. Testing Lab

**7. High Pressure
Refrigerant Test**



Bulldog LEED Projects



**ALGONQUIN COLLEGE
LEED PLATINUM
OTTAWA, ON**



**BELL CANADA
LEED GOLD
MONTREAL, QC**



**MIMA, W42ND ST.
LEED GOLD
NYC, NY
1700 BULLDOGS**



**Le Vistal
Phase I & II
LEED GOLD
Montreal, QC**



**The Riverhouse
LEED GOLD
Manhattan, NY**

A Unit for Every Project

- **Multi-Family Residential**
- **Commercial**
- **Hospitality**
- **Assisted Living & Retirement**
- **Educational**
- **Geothermal**
- **Retrofit**



**Great West Life
Montreal, QC**



**The Fairmont Empress Hotel
Victoria, BC**



**Timber Ridge Assisted Living
Issaquah, WA**



**1325 Jerome Ave
Bronx, NY**



**Residence Inn Marriott
Kansas City, KS**

For more projects see our [Sample Installation Guide](#)



InnKeeper Vertical Stack

IKV 008-018	¾ - 1½ tons	18"W x 14"D x 84"H
-------------	-------------	--------------------

Risers not included in "W"

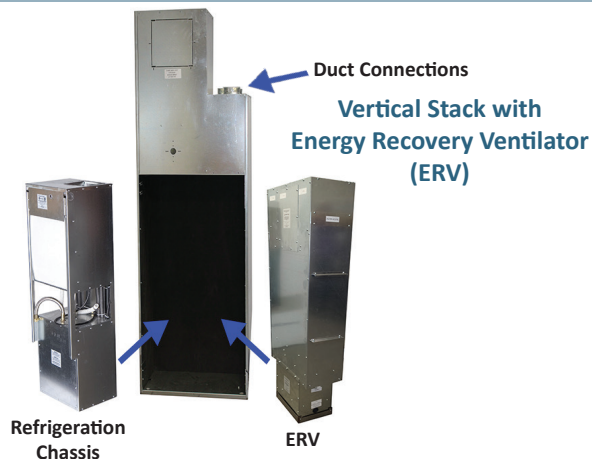
E-Series (IEV) high efficient model also available *

HomeKeeper Vertical Stack

HKV 016-030	1¼ - 2½ tons	20½"W x 20"D x 84"H
HKV 036-048	3 - 4 tons	24¾"W x 24"D x 84"H

Risers not included in "W"

E-Series (HEV) high efficient model also available *



Small SpaceKeeper Vertical

SKV008-018	¾ - 1½ tons
SKV020-036	1¾ - 3 tons
SKV042-060	3½ - 5 tons

E-Series (SEV) high efficient model also available *

Large SpaceKeeper Vertical

SKV070-100	5½ - 8½ tons
SKV120-150	10 - 12½ tons
SKV180-240	15 - 20 tons
SKV280-320	23 - 26½ tons
SKV360-480	30 - 40 tons



SideWinder

SDW008-015	¾ - 1¼ tons
------------	-------------

Slide out chassis for quick change out and repairs *



SpaceKeeper Console

SKC008-018	¾ - 1½ tons
------------	-------------



SpaceKeeper Horizontal

SKH008-018	¾ - 1½ tons
SKH020-036	1¾ - 3 tons
SKH042-060	3½ - 5 tons
SKH070-100	5½ - 8½ tons

E-Series (SEH) high efficient model also available *



SlimKeeper

SLK008-015	¾ - 1¼ tons
------------	-------------

11" High, no trap required *



Varipak Make-Up Air Units

4,000 CFM	10 - 20 tons
4,000-10,000 CFM	10 - 28 tons
12,000-25,000 CFM	20 - 125 tons
+ 25,000 CFM	Contact Factory

Varipak with Heat Wheel Option available *



KlassKeeper

KKV024-048	2-4 tons
------------	----------

Slide out chassis for quick change out and repairs outside of the classroom *

CGC makes the Bulldog heat pump, the most productive and worry-free heat pump in the building industry.

The Bulldog was designed to reduce day-to-day HVAC concerns for builders and owners, from initial layout and design, to installation, to occupant's comfort and cost.

It's quieter, tougher, easier to maintain and uses less electricity.

