

New England Projects



Multi Family Residential

67 Mechanic, Attleboro, MA

370-380 Harrison, Boston, MA

Courthouse Lofts, Worcester, MA

Island Creek Village North, Boston, MA

JCHE 132 Chestnut, Boston, MA

Kennedy Building, Hingham, MA

Lovejoy Wharf, Boston, MA

Ludlow Mills, Ludlow, MA

Montgomery Mill Apartments, Windsor Locks, CT

Parcel B, Boston, MA

Park City, Bridgeport, CT

Seaport M1 & M2, Boston, MA

Van Brodie Mills, Boston, MA



Seaport, Boston, MA



Lovejoy Wharf, Boston, MA



Courthouse Lofts, Worcester, MA

Hospitality

Cambria Hotel, Boston, MA

Jay Peak Resort, Jay, VT

Parcel B Marriott, Boston, MA



Cambria Hotel, Boston, MA

Assisted Living and Retirement

Golda Meir House, Newton, MA

Maplewood at Brewster, Brewster, MA

Maplewood at Mill Hill, Cape Cod, MA

Maplewood at Southport, Southport, CT

McAuley Centre, West Hartford, CT

Weinberg House, Brighton, MA



Maplewood at Brewster, Cape Cod, MA



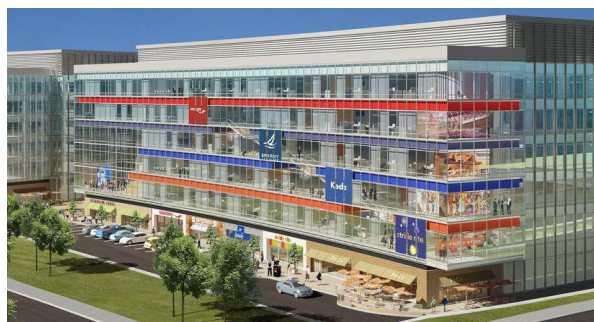
Golda Meir House, Newton, MA

Commercial

10 City Point, Waltham, MA

66 Field Point Road, Greenwich, CT

Ruth Chris Steakhouse, Waltham, MA



10 City Point, Waltham, MA

Mixed Use

The Central Building, Worcester, MA



The Central Building, Worcester, MA

No other heat pump does more, with less.



CGC Group of Companies
150 Britannia Rd East
Mississauga, Ontario, L4Z 2A4
Canada

1-905-568-1661

www.bulldogheatpump.com