

Detailed Overview of the SpaceKeeper Vertical

SKV008-060 (¾ - 5 Tons)



Features of the Bulldog SpaceKeeper Vertical



SKV008-060

- Small foot print
- Unpainted Galvanized steel, all interior of cabinet lined with ½" acoustic insulation
- Exceeds ASHRAE 90.1 efficiency rating
- 2 Configuration options
- Factory internally trapped

Standard on all Bulldog Units

- Hybrid Heat Pump with no reversing valves
- Hydronic heat
- Unit mounted microprocessor with safeties and diagnostics
- Factory mounted Demand Flow and Auto Flow valves optional
- Optimum efficiency at 2 USgpm/ton
- Quiet operation (Fan Coil sound levels in the heating mode)
- Special compressor isolation prevents 90% of vibration transmission
- Stainless Steel drain pan
- HFC-410A



SKV Heating and Cooling Capacities


Heating Capacities in Btu/h SpaceKeeper Vertical (SKV008-060)

EC Motors								
Unit Models	SKV008	SKV010	SKV012	SKV015	SKV018	SKV020	SKV024	SKV030
Nominal Air Flow (CFM)	280	320	400	500	600	700	800	1000
EWT 100°F	6,983	7,958	9,428	11,198	12,820	16,108	17,258	20,284
EWT 105°F	8,147	9,285	10,999	13,065	14,957	18,792	20,134	23,665
EWT 110°F	9,311	10,611	12,570	14,931	17,094	21,477	23,010	27,046
EWT 120°F	11,639	13,264	15,713	18,664	21,367	26,846	28,763	33,807

With EAT of 70°F and 2 USgpm/ton

EC Motors				
Unit Model	SKV036	SKV042	SKV048	SKV060
Nominal Air Flow (CFM)	1200	1400	1600	2000
EWT 100°F	23,012	30,771	33,997	39,925
EWT 105°F	26,848	35,900	39,663	46,579
EWT 110°F	30,683	41,028	45,330	53,234
EWT 120°F	38,354	51,285	56,662	66,542

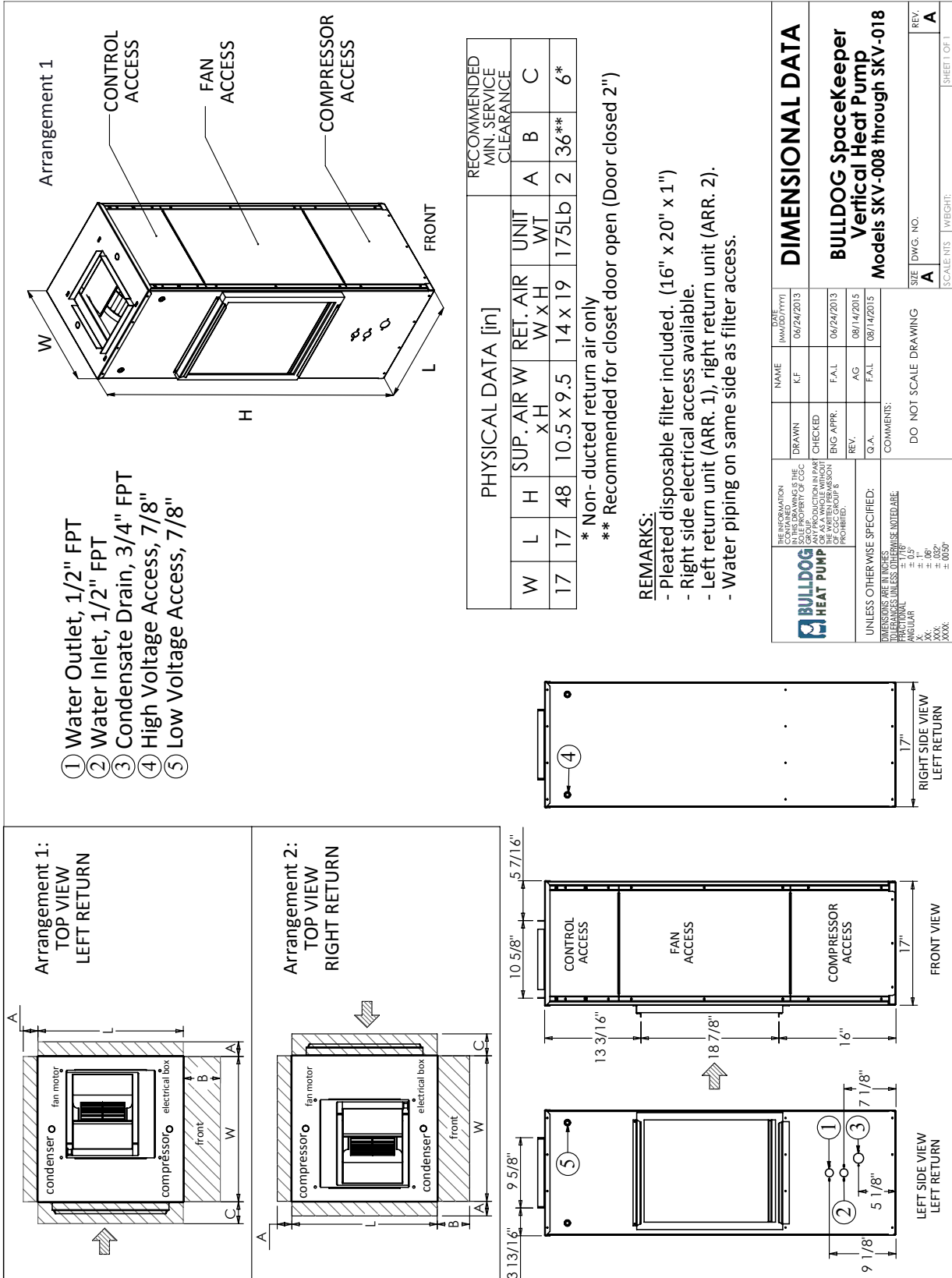
With EAT of 70°F and 2 USgpm/ton

 SpaceKeeper Vertical (SKV)	Model	Water Loop Heat Pump	
		Cooling EWT 86°F	
		Capacity (Btuh)	(EER Btuh/W)
	SKV008	8,601	15.10
	SKV010	9,532	14.30
	SKV012	12,190	14.10
	SKV015	14,438	14.00
	SKV018	17,108	13.80
	SKV020	18,850	15.60
	SKV024	23,089	16.00
	SKV030	26,241	13.70
	SKV036	30,112	13.30
	SKV042	41,125	16.30
	SKV048	49,842	16.60
	SKV060	55,403	14.30

Cooling capacities based upon EAT 80.6°F (26°C) DB / 66.2°F (19°C) WB, and EWT 86°F (30°C) * Fan Motors are EC type
Cooling capacity and efficiency rated in accordance with ISO 13256-1

SpaceKeeper Vertical Dimensional Drawing

SKV008-018



SpaceKeeper Vertical Dimensional Drawing

SKV020-036

