

Detailed Overview of the SpaceKeeper Console

SKC008-018 ($\frac{3}{4}$ - $1\frac{1}{2}$ Ton)



Features of the Bulldog SpaceKeeper Console



SKC008-018

- Two piece cabinet
- Universal left hand piping location for ease of installation
- Remote or unit mounted thermostat
- Power cord as a quick means of disconnect
- Optional fresh air damper
- ECM as standard

Standard on all Bulldog Units


- Hybrid Heat Pump with no reversing valves
- Hydronic heat
- Unit mounted microprocessor with safeties and diagnostics
- Factory mounted Demand Flow and Auto Flow valves optional
- Exceed ASHRAE 90.1 efficiency rating
- Quiet operation (Fan Coil sound levels in the heating mode)
- Special compressor isolation prevents 90% of vibration transmission
- Stainless Steel drain pan
- HFC-410A
- Optimum efficiency at 2 USgpm/ton

SKC Heating and Cooling Capacities

Heating Capacities in Btu/h SpaceKeeper Console (SKC008-018)

EC Motors					
Unit Model	SKC008	SKC010	SKC012	SKC015	SKC018
Nominal Air Flow (CFM)	240	300	360	450	540
EWT 100°F	6,482	7,359	8,198	9,636	10,920
EWT 105°F	7,562	8,586	9,564	11,242	12,740
EWT 110°F	8,642	9,812	10,930	12,848	14,560
EWT 120°F	10,803	12,265	13,663	16,060	18,200

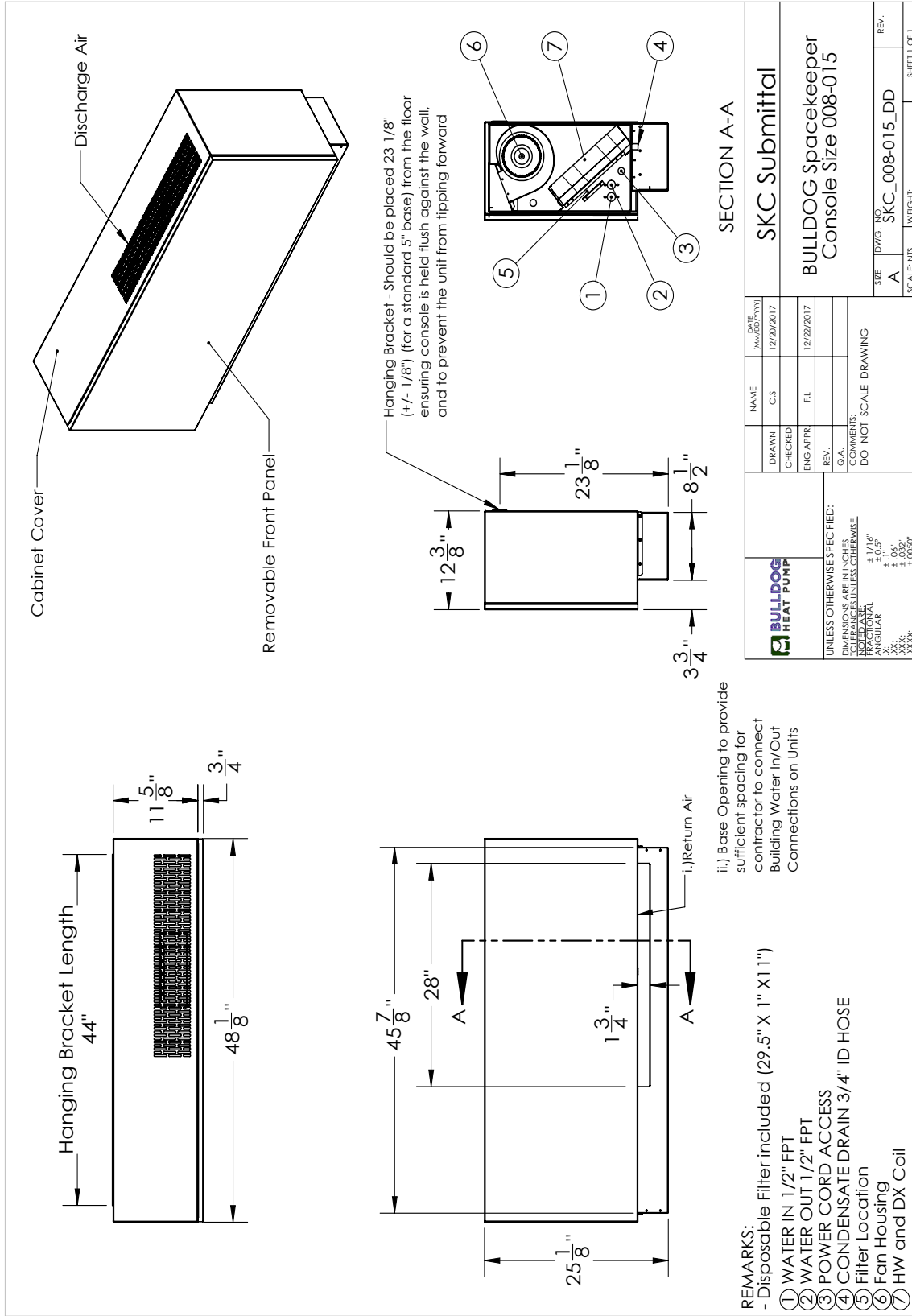
With EAT of 70°F and 2 USgpm/ton

	Model	Water Loop Heat Pump	
		Cooling EWT 86°F	
		Capacity (Btuh)	(EER Btuh/W)
SpaceKeeper Console (SKC)	SKC008	9,027	14.90
	SKC010	10,110	14.30
	SKC012	12,578	14.10
	SKC015	14,570	13.40
	SKC018	16,079	14.30

Cooling capacities based upon EAT 80.6°F (26°C) DB / 66.2°F (19°C) WB, and EWT 86°F (30°C) * Fan Motors are EC type
Cooling capacity and efficiency rated in accordance with ISO 13256-1

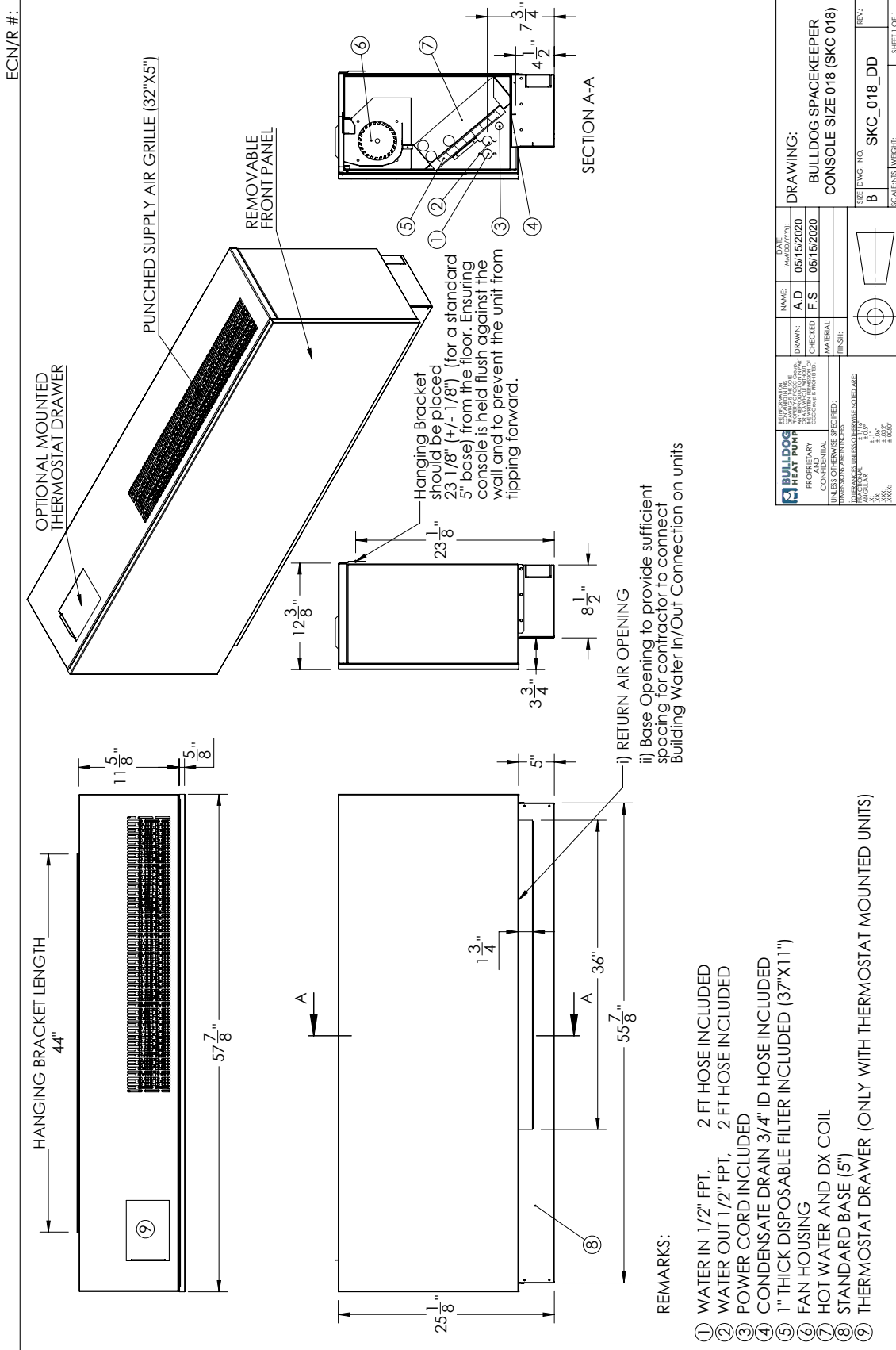
SpaceKeeper Console Dimensional Drawing

SKC008-015



SpaceKeeper Console Dimensional Drawing

SKC018



Last saved on: May-15-20; In the interest of continuous improvement, drawing subject to change without notice.

SHEET 01 OF 1

