

# Detailed Overview of the SpaceKeeper Vertical E-Series

High Efficiency SEV008-060 ( $\frac{3}{4}$  - 5 Tons)



## Features of the Bulldog SpaceKeeper Vertical E-Series Model



### SEV008-060

- Small footprint
- Factory internally trapped
- The E-Series far exceeds ASHRAE 90.1 efficiency rating
- Unpainted galvanized steel, interior of the cabinet is lined with  $\frac{1}{2}$ " acoustic insulation
- Standard factory mounted demand flow and auto flow valves, EC motors

### Standard on all Bulldog Units

- Hybrid Heat Pump with no reversing valves
- Hydronic heat
- Unit mounted microprocessor with safeties and diagnostics
- Quiet operation (Fan Coil sound levels in the heating mode)
- Special compressor isolation prevents 90% of vibration transmission
- Stainless Steel drain pan
- HFC-410A
- Optimum efficiency at 2 USgpm/ton



# SEV Heating and Cooling Capacities


## Heating Capacities in Btu/h SpaceKeeper Vertical E-Series (SEV008-060)

EC Motors						
Unit Models	SEV008	SEV010	SEV012	SEV015	SEV018	SEV020
Nominal Air Flow (CFM)	280	320	400	500	600	700
EWT 100 °F	6,983	7,958	9,428	12,467	14,433	16,108
EWT 105 °F	8,147	9,285	10,999	14,545	16,839	18,792
EWT 110 °F	9,311	10,611	12,570	16,623	19,244	21,477
EWT 120 °F	11,639	13,264	15,713	20,779	24,055	26,846

With EAT of 70°F and 2 USgpm/ton

EC Motors						
Unit Models	SEV024	SEV030	SEV036	SEV042	SEV048	SEV060
Nominal Air Flow (CFM)	800	1000	1200	1400	1600	2000
EWT 100 °F	17,258	23,684	27,346	30,771	36,472	43,222
EWT 105 °F	20,134	27,631	31,903	35,900	42,551	50,425
EWT 110 °F	23,010	31,578	36,461	41,028	48,630	57,269
EWT 120 °F	28,763	39,473	45,576	51,285	60,787	72,036

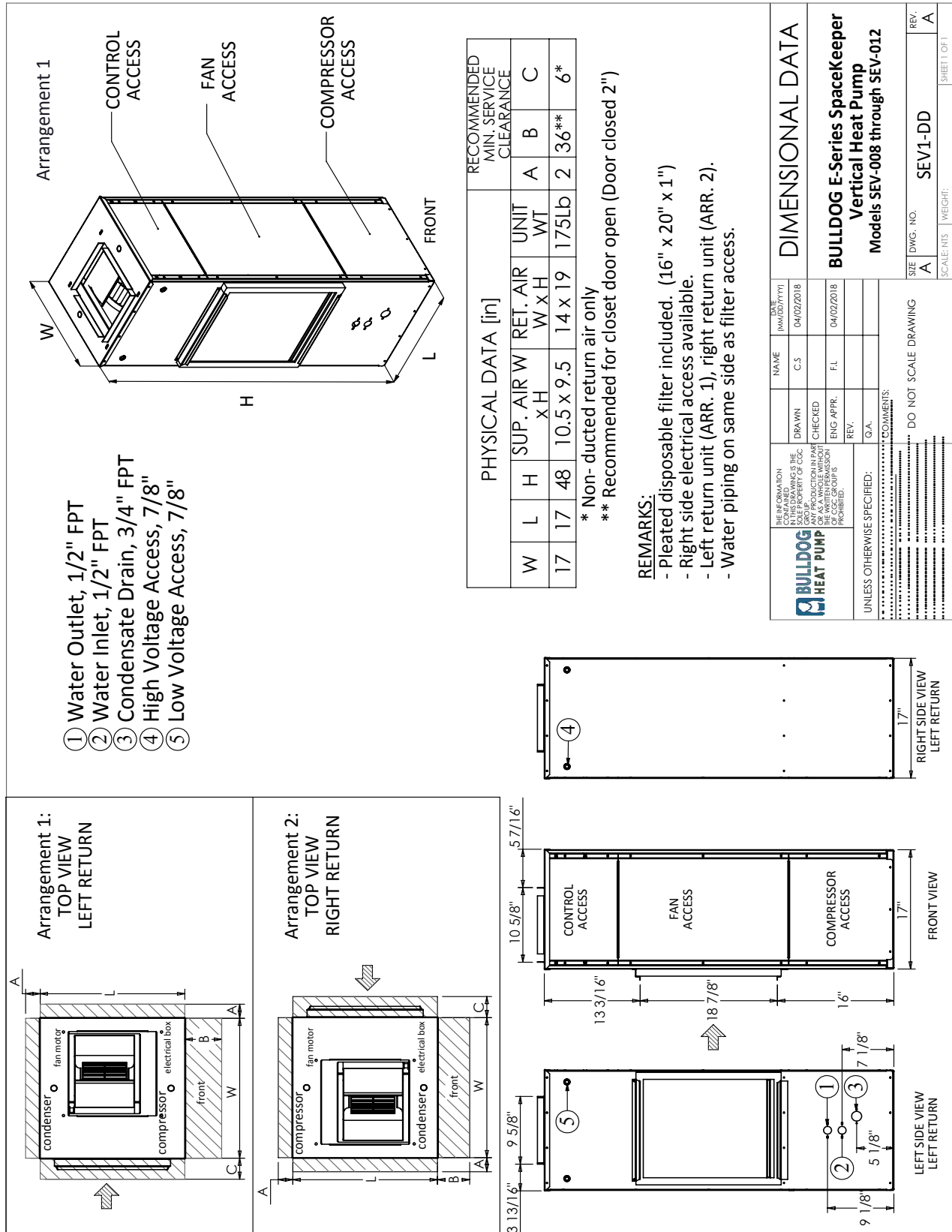
With EAT of 70°F and 2 USgpm/ton

 SpaceKeeper Vertical E-Series (SEV)	Model	Water Loop Heat Pump	
		Cooling EWT 86 °F	
	Capacity (Btuh)	(EER Btuh/W)	
SEV008	9,274	16.50	
SEV010	10,318	15.50	
SEV012	12,925	15.20	
SEV015	15,285	15.30	
SEV018	18,294	17.20	
SEV020	19,274	18.30	
SEV024	24,602	18.10	
SEV030	30,009	18.50	
SEV036	38,591	18.40	
SEV042	42,199	17.40	
SEV048	54,045	18.60	
SEV060	61,225	16.50	

Cooling capacities based upon EAT 80.6°F (26°C) DB / 66.2°F (19°C) WB, and EWT 86°F (30°C) \* Fan Motors are EC type  
Cooling capacity and efficiency rated in accordance with ISO 13256-1

# SpaceKeeper Vertical E-Series Dimensional Drawing

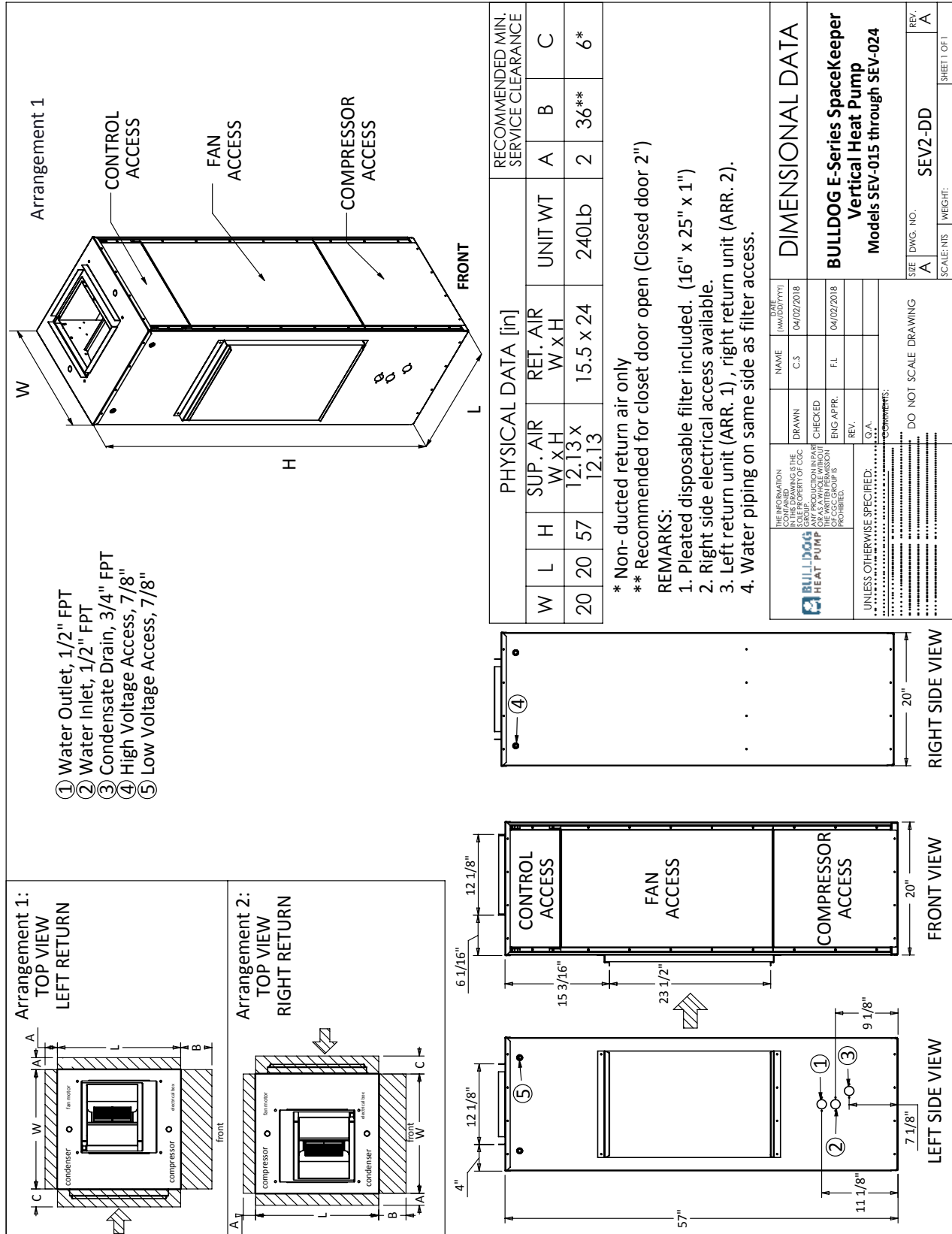
SEV008-012



IN THE INTEREST OF CONTINUOUS IMPROVEMENT, DRAWING SUBJECT TO CHANGE WITHOUT NOTICE.

# SpaceKeeper Vertical E-Series Dimensional Drawing

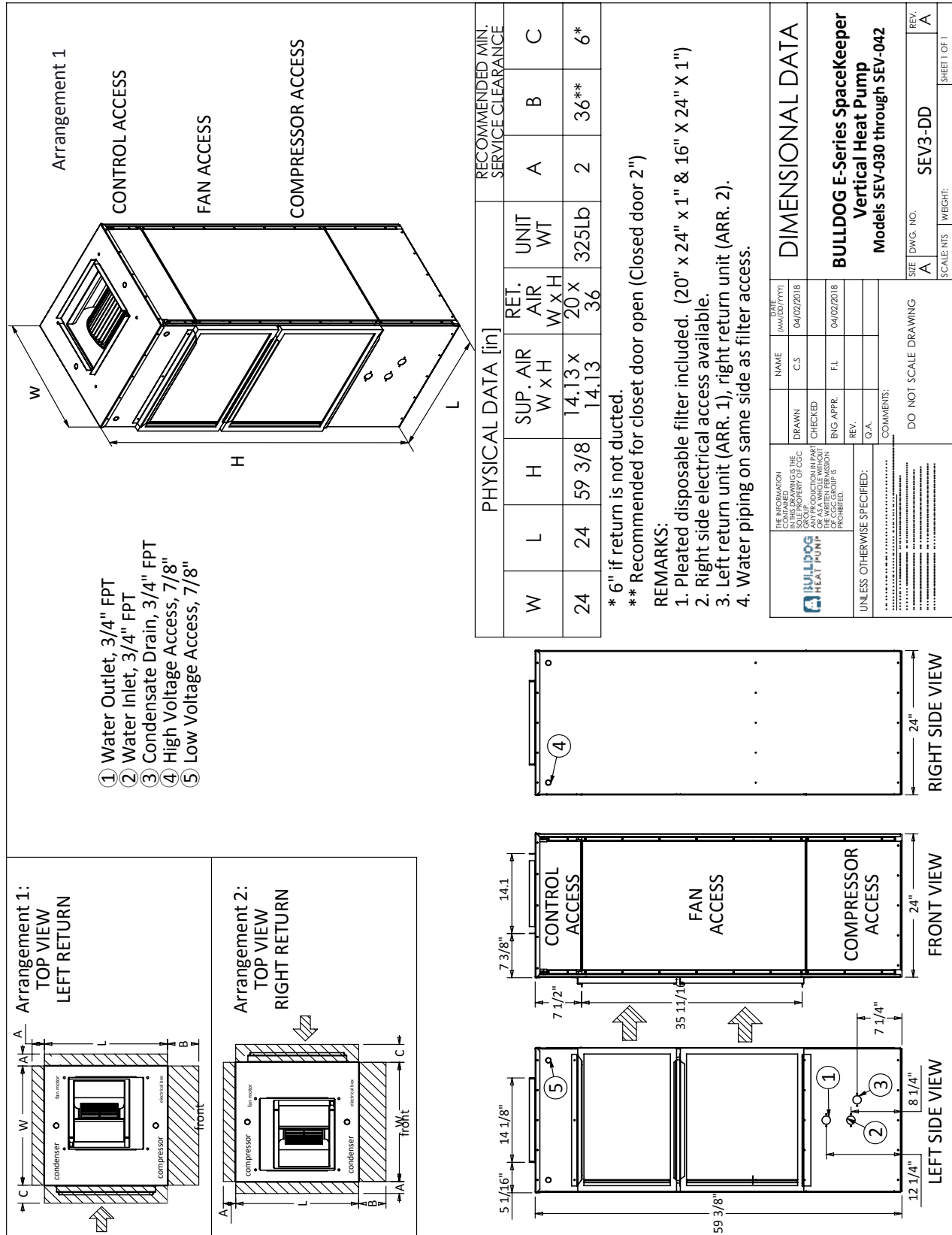
SEV015-024



- ① Water Outlet, 1/2" FPT
- ② Water Inlet, 1/2" FPT
- ③ Condensate Drain, 3/4" FPT
- ④ High Voltage Access, 7/8"
- ⑤ Low Voltage Access, 7/8"

# SpaceKeeper Vertical E-Series Dimensional Drawing

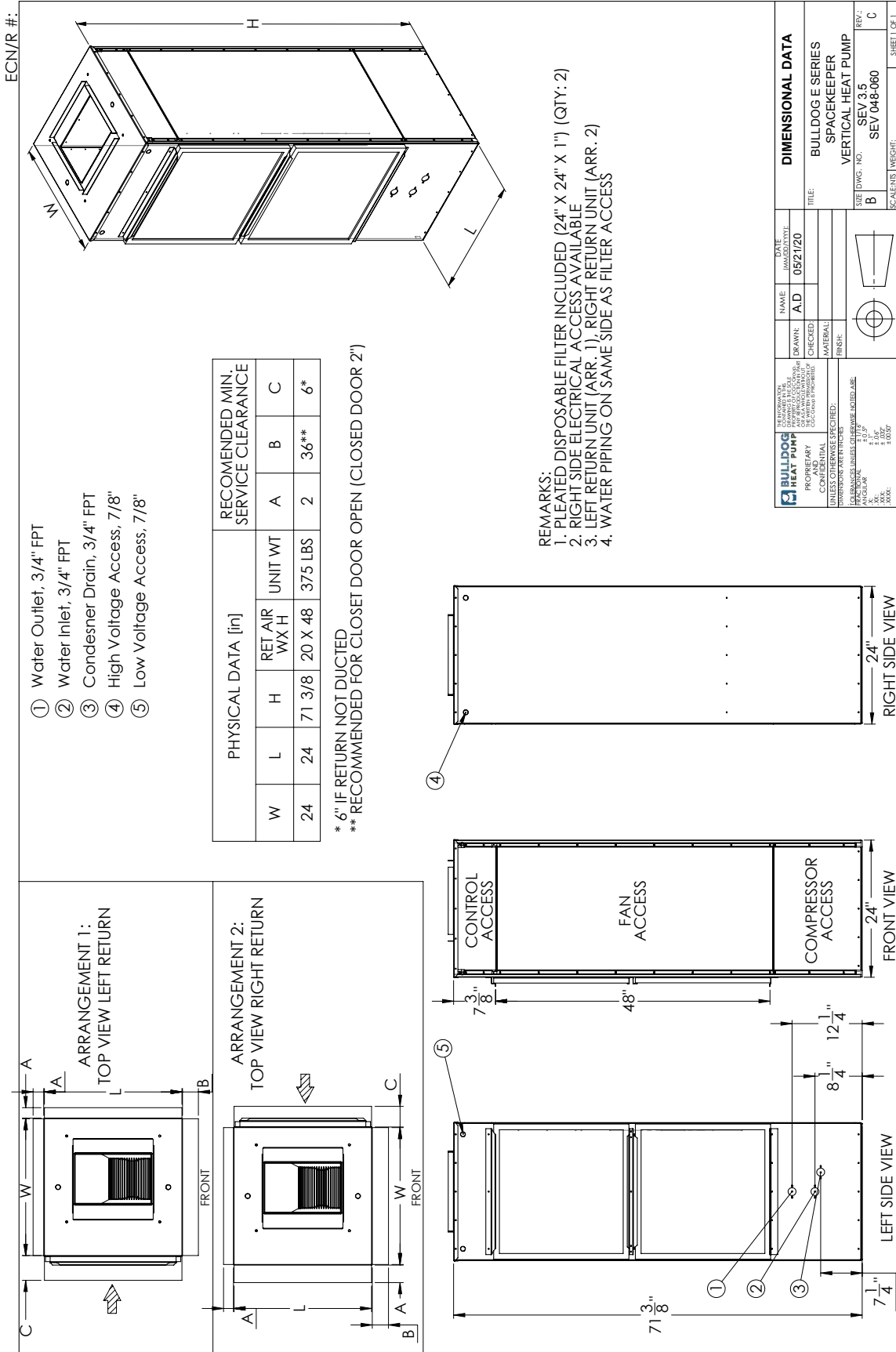
SEV030-042



IN THE INTEREST OF CONTINUOUS IMPROVEMENT, DRAWING SUBJECT TO CHANGE WITHOUT NOTICE.

# SpaceKeeper Vertical E-Series Dimensional Drawing

SEV048-060



BULLDOG HEAT PUMP		NAME: A.D.		DATE: 05/2/20		DIMENSIONAL DATA	
DESIGNED BY:	PROF. ENGINEER:	DRAWN:	CHECKED:	MATERIAL:	FINISH:	TITLE:	BULLDOG E SERIES SPACEKEEPER VERTICAL HEAT PUMP
PROPRIETARY	CONFIDENTIAL	UNLESS OTHERWISE SPECIFIED:		DIMENSIONS ARE IN INCHES		SIZE:	DWG. NO. SEV 048-060
FRAMING: 1. 1/2" MIN. INSULATION		2. 1/2" MIN. INSULATION		3. 1/2" MIN. INSULATION		SCALE:	NONE
4. 1/2" MIN. INSULATION		5. 1/2" MIN. INSULATION		6. 1/2" MIN. INSULATION		REV.:	C
7. 1/2" MIN. INSULATION		8. 1/2" MIN. INSULATION		9. 1/2" MIN. INSULATION		SHEET:	1 OF 1

Last saved on: May-22-20; in the interest of continuous improvement, drawing subject to change without notice.