

Detailed Overview of the SpaceKeeper Horizontal E-Series

High Efficiency SEH008-060 (¾ - 5 Tons)



Features of the Bulldog SpaceKeeper Horizontal E-Series Model



SEH008-060

- Small footprint
- Four configurations options
- The E-Series far exceeds ASHRAE 90.1 efficiency rating
- Hanging brackets and drain hose included
- Unpainted galvanized steel, interior of the cabinet is lined with ½” acoustic insulation
- Standard: factory mounted demand flow and auto flow valves, EC motors

Standard on all Bulldog Units

- Hybrid Heat Pump with no reversing valves
- Hydronic heat
- Unit mounted microprocessor with safeties and diagnostics
- HFC-410A
- Quiet operation (Fan Coil sound levels in the heating mode)
- Special compressor isolation prevents 90% of vibration transmission
- Stainless Steel drain pan
- Optimum efficiency at 2USgpm/ton



SEH Heating and Cooling Capacities

Heating Capacities in Btu/h


SpaceKeeper Horizontal E-Series (SEH008-060)

EC Motors						
Unit Model	SEH008	SEH010	SEH012	SEH015	SEH018	SEH020
Nominal Air Flow (CFM)	280	320	400	500	600	700
EWT 100 °F	6,806	7,743	9,138	12,507	14,512	16,217
EWT 105 °F	7,941	9,034	10,661	14,592	16,931	18,920
EWT 110 °F	9,075	10,324	12,184	16,676	19,350	21,623
EWT 120 °F	11,344	12,905	15,230	20,845	24,187	27,029

With EAT of 70 °F and 2 USgpm/ton

EC Motors						
Unit Model	SEH024	SEH030	SEH036	SEH042	SEH048	SEH060
Nominal Air Flow (CFM)	800	1000	1200	1400	1600	2000
EWT 100 °F	18,184	23,254	26,785	30,080	37,769	44,792
EWT 105 °F	21,215	27,129	31,249	35,093	44,064	52,257
EWT 110 °F	24,246	31,005	35,713	40,106	50,358	59,722
EWT 120 °F	30,307	38,756	44,641	50,133	62,948	74,653

With EAT of 70 °F and 2 USgpm/ton

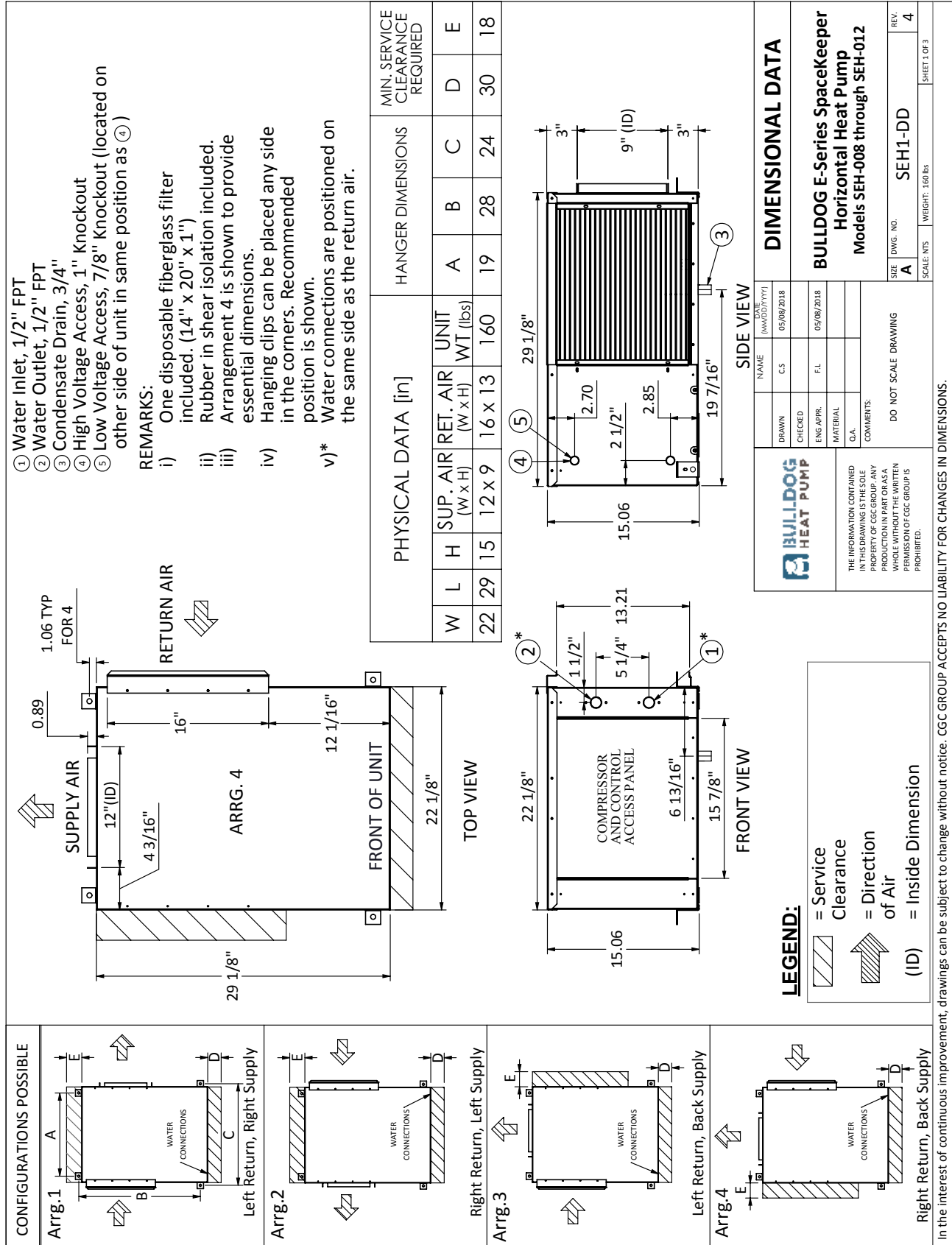
	Model	Water Loop Heat Pump	
		Cooling EWT 86 °F	
		Capacity (Btuh)	(EER Btuh/W)
SpaceKeeper E-Series Horizontal (SEH)	SEH008	8,927	15.30
	SEH010	10,019	14.60
	SEH012	12,610	14.40
	SEH015	13,091	16.50
	SEH018	18,659	16.70
	SEH020	19,175	17.20
	SEH024	23,894	16.60
	SEH030	29,181	17.00
	SEH036	36,942	15.90
	SEH042	43,742	16.60
	SEH048	51,579	17.80
	SEH060	60,110	16.20

Cooling capacities based upon EAT 80.6 °F (26 °C) DB / 66.2 °F (19 °C) WB, and EWT 86 °F (30 °C) * Fan Motors are EC type
Cooling capacity and efficiency rated in accordance with ISO 13256-1



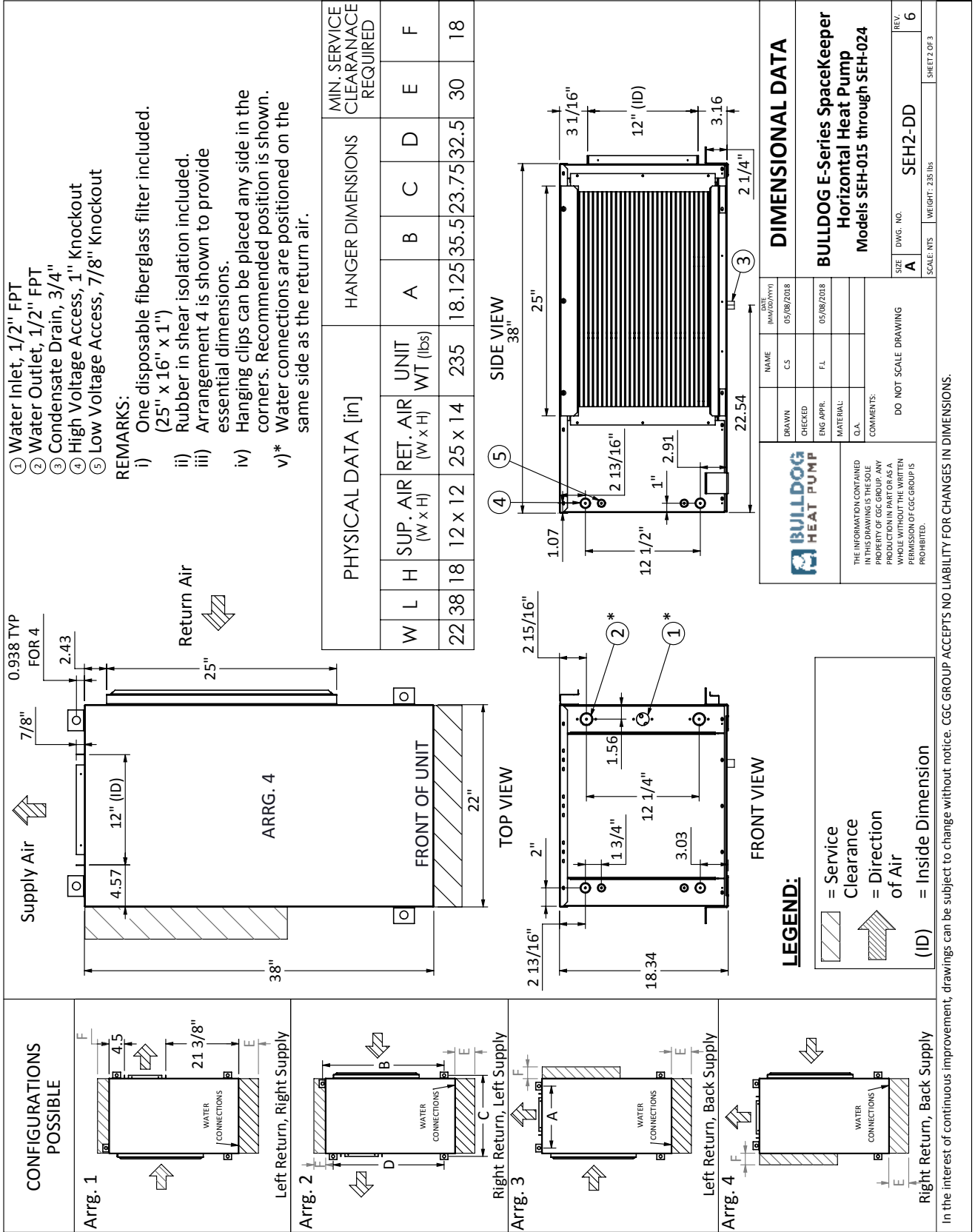
SpaceKeeper E-Series Dimensional Drawing

SEH008-012



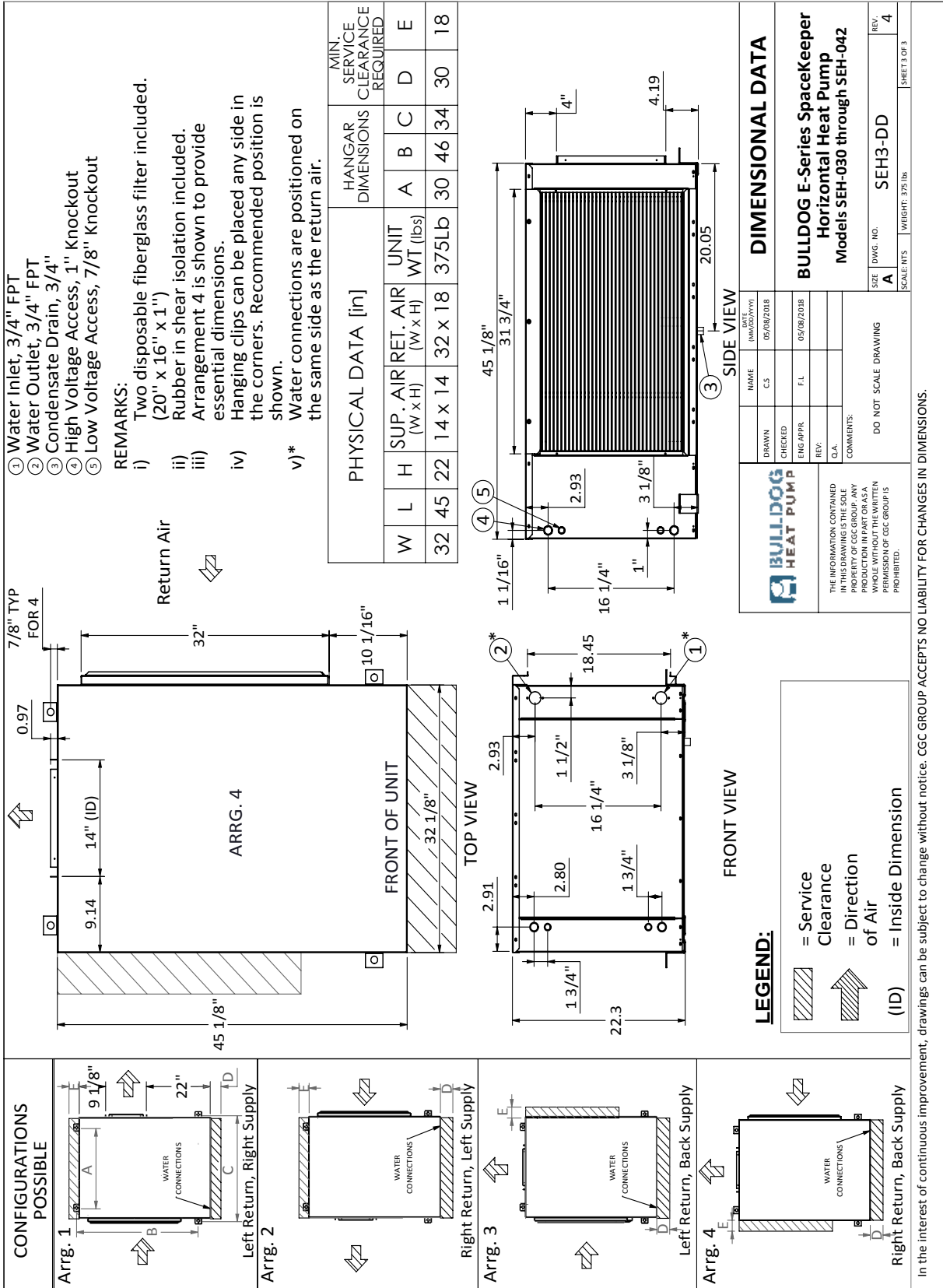
SpaceKeeper E-Series Dimensional Drawing

SEH015-024



SpaceKeeper E-Series Dimensional Drawing

SEH030-042



SpaceKeeper E-Series Dimensional Drawing

SEH048-060

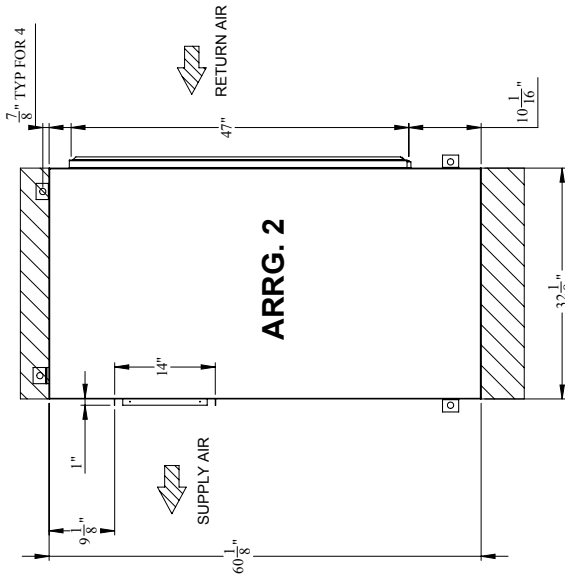
ECN/R #:

- ① WATER INLET, 1-1/4" FPT
- ② WATER OUTLET, 1-1/4" FPT
- ③ CONDENSATE DRAIN, 3/4"
- ④ HIGH VOLTAGE ACCESS, 1" KNOCKOUT
- ⑤ LOW VOLTAGE ACCESS, 7/8" KNOCKOUT

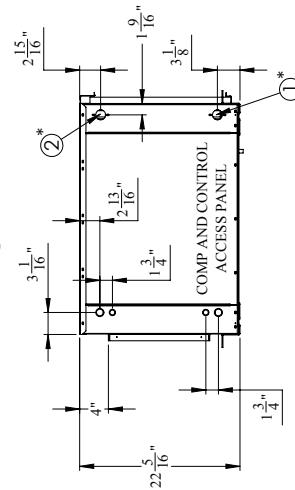
REMARKS:

- i) TWO DISPOSABLE FIBERGLASS FILTER INCLUDED. (20"X24"X1")
- ii) RUBBER IN SHEAR ISOLATION INCLUDED.
- iii) ARRANGEMENT 2 IS SHOWN TO PROVIDE ESSENTIAL DIMENSIONS
- iv) HANGING CLIPS CAN BE PLACED ANY SIDE IN THE CORNERS. RECOMMENDED POSITION IS SHOWN.
- v)* WATER CONNECTIONS ARE POSITIONED ON THE SAME SIDE AS THE RETURN AIR

PHYSICAL DATA (INCHES)				HANGER DIMENSIONS				MINIMUM SERVICE CLEARANCE REQUIRED		
W	L	H	UNIT SUP AIR (WXH)	RET. AIR (WXH)	UNIT WT (LBS)	A	B	C	D	E
32	60	22	14 X 14	47 X 20		26	57	34	30	18



TOP VIEW

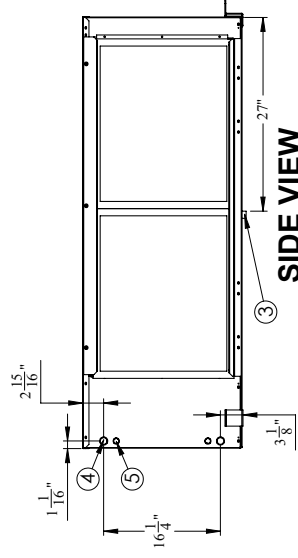
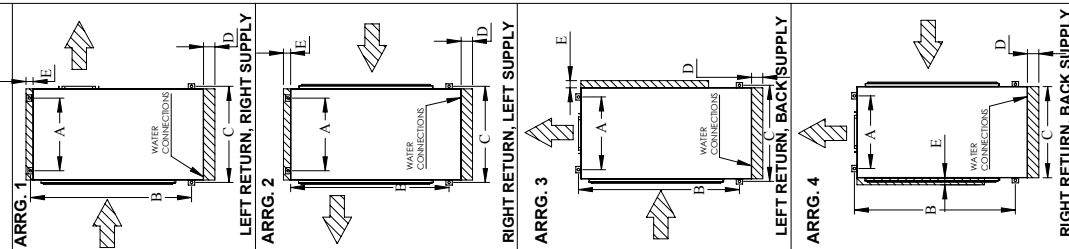


FRONT VIEW

LEGEND

- SERVICE CLEARANCE
- DIRECTION OF AIR
- (ID) INSIDE DIMENSION

CONFIGURATIONS POSSIBLE



SIDE VIEW

BULLDOG HEAT PUMP PROPRIETARY CONFIDENTIAL UNLESS OTHERWISE SPECIFIED: DIMENSIONS ARE IN INCHES DECIMALS: 1/16" INCREMENTS ANGULAR: 1/2°, 1°, 5/16°, 1°, 3/16°, 1/8°, 1/4°, 1/2°, 3/4°, 1°, 1 1/4°, 1 1/2°, 1 3/4°, 2°, 2 1/2°, 3°, 3 1/2°, 4°, 4 1/2°, 5°, 5 1/2°, 6°, 6 1/2°, 7°, 7 1/2°, 8°, 8 1/2°, 9°, 9 1/2°, 10°, 11°, 11 1/2°, 12°, 15°, 18°, 20°, 22 1/2°, 25°, 30°, 36°, 45°, 60°, 90°, 120°, 135°, 150°, 180°	PROJECT: DIMENSIONAL DATA	
	NAME: A.D. DRAWN: 04/06/2020 CHECKED: 04/06/2020	TITLE: BULLDOG E-SERIES SPACE KEEPER HORIZONTAL SPACE PUMP
	MATERIAL: See Specifications FINISH: See Specifications	SIZE DWG. NO: SEH3.5-DD SCALE: AS SHOWN
	SHEET: 1 OF 1	

Last saved on: April-06-20; in the interest of continuous improvement, drawing subject to change without notice.