

# Detailed Overview of the SideWinder

SDW008-015 ( $\frac{3}{4}$  -  $1\frac{1}{4}$  Tons)



## Features of the Bulldog SideWinder

### SDW008-015

- Slide out chassis ensures quick replacement and repairs outside of the suite
- ECM as standard
- Includes painted hinged access panel
- Power cord as a quick means of disconnect
- No condensate trap required with positive pressure drain pan

### Standard on all Bulldog Units

- Hybrid Heat Pump with no reversing valves
- Hydronic heat
- Unit mounted microprocessor with safeties and diagnostics
- Factory mounted Demand Flow and Auto Flow valves optional
- Exceed ASHRAE 90.1 efficiency rating
- Quiet operation (Fan Coil sound levels in the heating mode)
- Special compressor isolation prevents 90% of vibration transmission
- Stainless Steel drain pan
- HFC-410A
- Optimum efficiency at 2 USgpm/ton




# SDW Heating and Cooling Capacities

## Heating Capacities in Btu/h SideWinder (SDW008-015)

EC Motors				
Unit Models	SDW008	SDW010	SDW012	SDW015
Nominal Air Flow (CFM)	240	300	360	450
EWT 100°F	6,997	7,981	8,903	10,507
EWT 105°F	8,163	9,311	10,387	12,258
EWT 110°F	9,329	10,641	11,871	14,010
EWT 120°F	11,661	13,301	14,839	17,512

With EAT of 70°F and 2 USgpm/ton

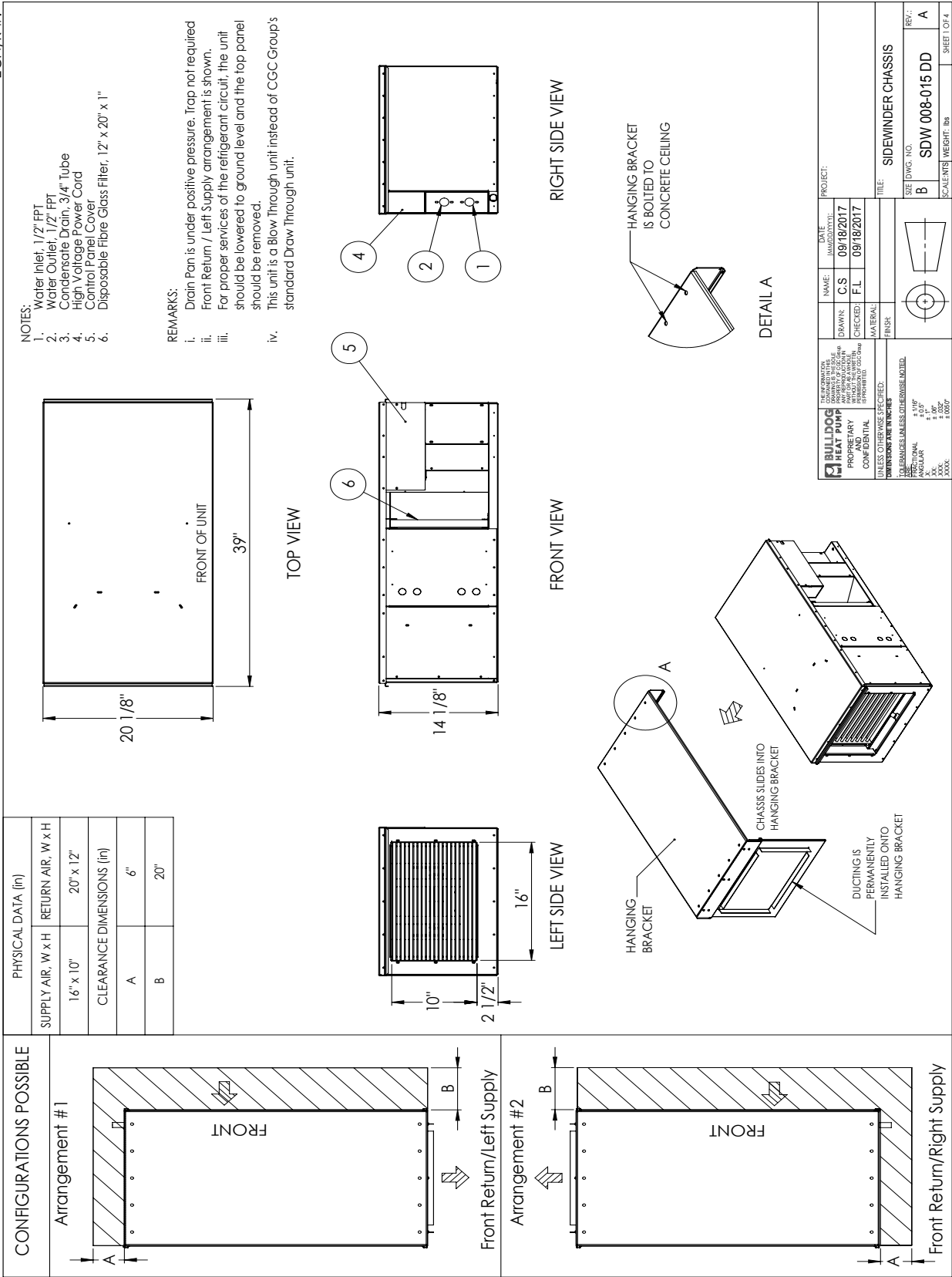
	Model	Water Loop Heat Pump	
		Cooling EWT 86°F	
		Capacity (Btuh)	(EER Btuh/W)
SideWinder (SDW)	SDW008	8,601	15.10
	SDW010	9,532	14.30
	SDW012	12,190	14.10
	SDW015	14,438	14.00

Cooling capacities based upon EAT 80.6°F (26°C) DB / 66.2°F (19°C) WB, and EWT 86°F (30°C) \* Fan motors are EC type  
Cooling capacity and efficiency rated in accordance with ISO 13256-1

# SideWinder Dimensional Drawing

SDW008-015

ECN/R #:

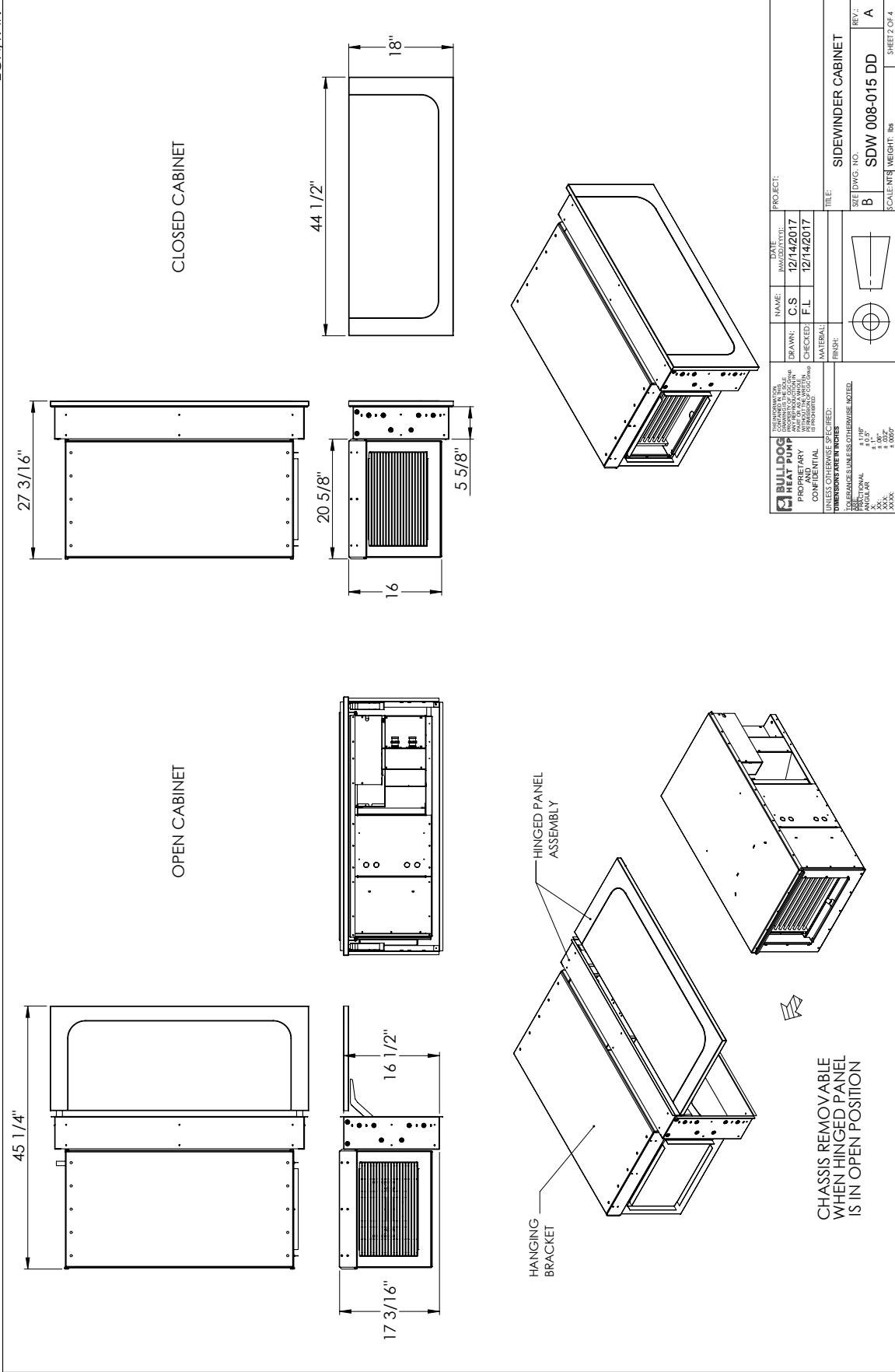


THE INFORMATION CONTAINED HEREIN IS UNCLASSIFIED EXCEPT WHERE SHOWN OTHERWISE AND IS NOT TO BE RELEASED TO THE PUBLIC WITHOUT THE EXPRESS WRITTEN PERMISSION OF BULLDOG HEAT PUMP COMPANY	NAME: C.S.	DATE: 09/18/2017	PROJECT: SIDEWINDER CHASSIS
CONFIDENTIAL	DRAWN: F.L.	CHECKED: F.L.	SIZE (DWG. NO.): B SDW 008-015 DD
UNLESS OTHERWISE SPECIFIED: DIMENSIONS ARE IN INCHES	MATERIAL: FINISH:	SCALE(S):	WEIGHT: lbs
FOR DIMENSIONS UNLESS OTHERWISE NOTED: 1/16" ± 0.005" 1/32" ± 0.002" 1/8" ± 0.003" 3/16" ± 0.004" 1/4" ± 0.005" 5/16" ± 0.006" 3/8" ± 0.008" 1/2" ± 0.008" 5/8" ± 0.010" 3/4" ± 0.010" 1" ± 0.010"			REV: A
			SHEET 1 OF 4

Last saved on: November-02-18; In the interest of continuous improvement, drawing subject to change without notice.

# SideWinder Dimensional Drawing - Cabinet

ECN/R #:



Last saved on: November-02-18; in the interest of continuous improvement, drawing subject to change without notice.