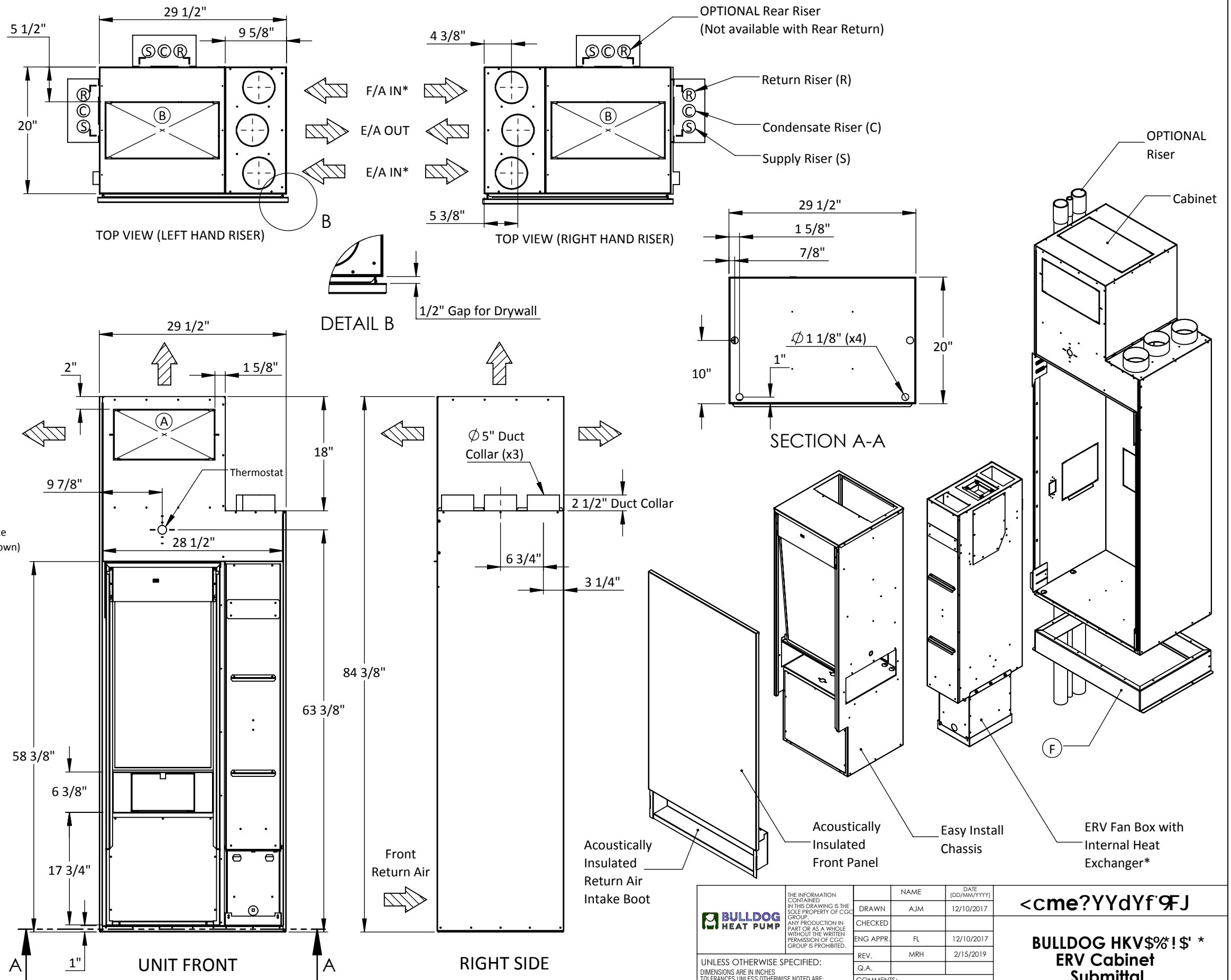


REMARKS:

- > Arrows toward unit show RETURN option.
- > Arrows away from unit show SUPPLY option.
- > Water Inlet / Outlet = 1/2" MPT.
- > Condensate Drain = 3/4" ID Hose.
- > Disposable filter included (16"x24"x1") for HKV016-024 and (16"x28"x1") for HKV030 & 036

- (A) - 16" x 8" KnockOuts for Supply Ducting
- (B) - 18" x 9" KnockOuts for Supply Ducting
- (C) - Electrical Box KnockOut for Electrical Connections
- (D) - KnockOut For Flex. Hose Connection of Risers to Chassis or for Return Air
- (E) - KnockOut For OPTIONAL 120V Relay for ERV Interlock with Toilet Exhaust - ERV Option Only
- (F) - Optional Cabinet Base Extensions (Various Heights Available)



*NOTE: The F/A IN and E/A IN are field reversible

| | | | |
|--|---|---|-------------------------------|
| | <small>THE INFORMATION CONTAINED IN THIS DRAWING IS THE SOLE PROPERTY OF CGC GROUP. ANY PRODUCTION IN PART OR AS A WHOLE WITHOUT THE WRITTEN PERMISSION OF CGC GROUP IS PROHIBITED.</small> | | NAME: AJM DATE: 12/10/2017 |
| | CHECKED: FL DATE: 12/10/2017 | | |
| | ENG APPR: MRH DATE: 2/15/2019 | BULLDOG HKV\$%!*\$ * ERV Cabinet Submittal | |
| | REV. Q.A. COMMENTS: | DO NOT SCALE DRAWING | |
| <small>UNLESS OTHERWISE SPECIFIED: DIMENSIONS ARE IN INCHES TOLERANCES UNLESS OTHERWISE NOTED ARE:</small> | | SIZE: A DWG. NO.: HKV_HEV_ERV_DD SCALE: NTS | REV. B SHEET 1 OF 1 |