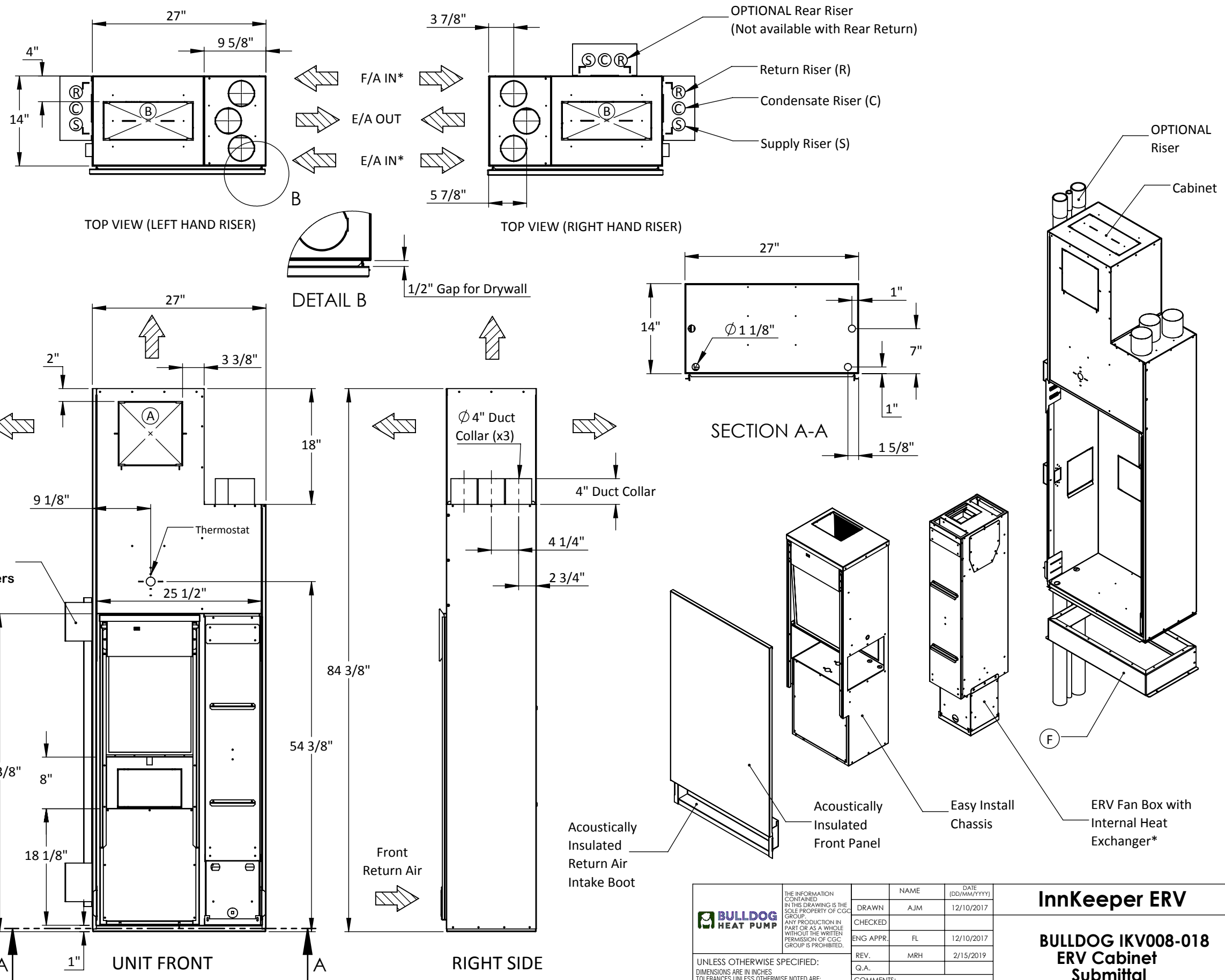


**REMARKS:**

- > Arrows toward unit show RETURN option.
- > Arrows away from unit show SUPPLY option.
- > Water Inlet / Outlet = 1/2" MPT.
- > Condensate Drain = 3/4" ID Hose.
- > Wire frame filter included (14"x16.75")

- (A) - 10" x 10" KnockOuts for Supply Ducting
- (B) - 14" x 6" KnockOuts for Supply Ducting
- (C) - Electrical Box KnockOut for Electrical Connections
- (D) - KnockOut For Flex. Hose Connection of Risers to Chassis or for Return Air
- (E) - KnockOut For OPTIONAL 120V Relay for ERV Interlock with Toilet Exhaust - ERV Option Only
- (F) - Optional Cabinet Base Extensions (Various Heights Available)



\*NOTE: The F/A IN and E/A IN are field reversible

	THE INFORMATION CONTAINED IN THIS DRAWING IS THE SOLE PROPERTY OF CGC GROUP. ANY PRODUCTION IN PART OR AS A WHOLE WITHOUT THE WRITTEN PERMISSION OF CGC GROUP IS PROHIBITED.		NAME	DATE	<p><b>InnKeeper ERV</b></p> <p><b>BULLDOG IKV008-018</b></p> <p><b>ERV Cabinet</b></p> <p><b>Submittal</b></p>
	DRAWN	AJM	12/10/2017		
	CHECKED				
	ENG APPR.	FL	12/10/2017		
	REV.	MRH	2/15/2019		
UNLESS OTHERWISE SPECIFIED: DIMENSIONS ARE IN INCHES TOLERANCES UNLESS OTHERWISE NOTED ARE: FRACTIONAL ± .1/16" ANGULAR ± 0.5° X ± .1" XX ± .06" XXX ± .032" XXXX ± .0050"			Q.A.		SCALE: NTS
DO NOT SCALE DRAWING			COMMENTS:		SIZE: <b>A</b>
					DWG. NO.: IKV_IEV_ERV_DD
					REV. <b>B</b>
					WEIGHT:
					SHEET 1 OF 1