



BULLDOG
HEAT PUMP



No other heat pump does more, with less.

From builder to owner, a Bulldog system provides maximum advantages with minimum concerns.



More Economical with Less Heating Costs

It's a well-known fact that heating with electricity costs more than heating with natural gas. The difference in costs can vary from 30% to 60% and even more. The Bulldog takes this into consideration, and never uses electricity to heat.



More Quiet with Less Compressor Operation

The Bulldog was built to be a quieter unit, specifically in heating mode when the compressor doesn't run and is therefore silent.



More Contribution to LEED Points with Less Energy Costs

The Bulldog contributes more towards LEED points due to lower heating and electrical costs. A recent independent performance assessment concluded that the Bulldog contributes between 21% and 39% more towards various LEED rating systems than other WSHP systems.



More Comfort with Less Full Load Heat

The Bulldog provides part load heat in Spring and Fall, and full heat in Winter—unlike most WSHP systems that deliver full heat all year round. With a graduated low-speed-first fan action, the Bulldog delivers a more gradual temperature rise—eliminating the “hot blast” common to WSHPs.



More Usable Space with Less Footprint

The Bulldog is distinctively smaller and has a number of space-saving features, including direct drywall mounting onto the cabinet that eliminates the need for 2x4 mounting studs. This feature alone creates more than 2 sq. ft. of additional floor space.



More Peace of Mind with Less Worry

We've created the Bulldog to work better, last longer, be easier to install, avoid breakdowns, and reduce service disruption. The Bulldog will protect your financial and time investments and reduce your risk. Heating mode operation is more reliable since the compressor is not required.



More Reliable with Less High Rate of Failure Parts

By evaluating where and when WSHPs are most likely to fail—including reversing valve failures, compressor malfunctions and installation errors—modifications made to the Bulldog product design have resulted in significantly greater reliability.



More Affordable with Less Installation Costs

The Bulldog can run with lower flow rates and high EER's, allowing for smaller pipes, smaller cooling towers and lower pumping costs.





InnKeeper Vertical Stack

IKV 008-018 ¾ - 1½ tons 21"W x 14"D x 84"H

"E" series, IEV, high efficient model also available

HomeKeeper Vertical Stack

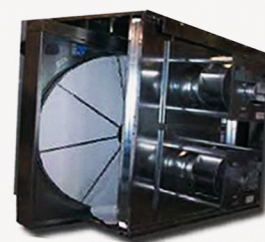
HKV 020-036 1¼ - 3 tons 24"W x 20"D x 84"H

"E" series, HEV, high efficient model also available



Varipak Make-Up Air Units

| | |
|-------------------|-----------------|
| 4,000 CFM | 10 - 20 tons |
| 4,000-10,000 CFM | 10 - 28 tons |
| 12,000-25,000 CFM | 20 - 100 tons |
| +25,000 CFM | Contact Factory |



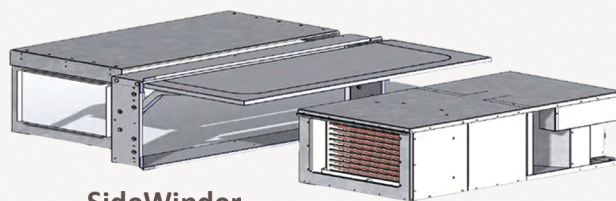
Varipak with Heat Wheel option



SlimKeeper

SLK 008-015 ¾ - 1¼ tons

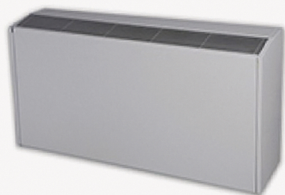
11" high, NO trap required



SideWinder

SWD 008-024 ¾ - 2 tons

Slide out chassis



SpaceKeeper Console

SKC 008-015 ¾ - 1¼ tons

SpaceKeeper Horizontal

| | |
|-------------|-------------|
| SKH 008-018 | ¾ - 1½ tons |
| SKH 020-036 | 1¼ - 3 tons |
| SKH 042-060 | 3½ - 5 tons |
| SKH 070-100 | 5½ - 8 tons |

"E" series, SEH, high efficient model also available



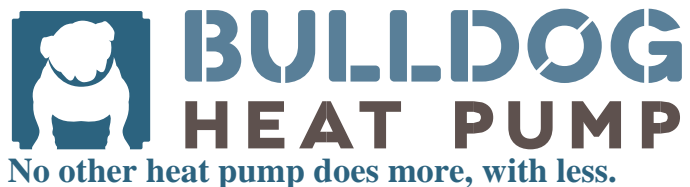
Small SpaceKeeper Vertical

| | |
|-------------|-------------|
| SKV 008-018 | ¾ - 1½ tons |
| SKV 020-036 | 1¼ - 3 tons |
| SKV 042-060 | 3½ - 5 tons |

"E" series, SEV, high efficient model also available

Large SpaceKeeper Vertical

| | | |
|-------------|---------------|--------------------|
| SKV 070-100 | 6 - 8 tons | E Series Available |
| SKV 120-150 | 10 - 12½ tons | |
| SKV 180-240 | 15 - 20 tons | |
| SKV 280-320 | 23 - 26½ tons | |



- Smaller footprint
- Greater design and layout flexibility
- Fewer high failure parts
- Easier LEED certification with more LEED points
- Quieter
- Greater comfort
- Less reliance on electricity
- More efficient
- Lower pumping requirements
- Reduced waste heat
- Higher EER
- Easier service and maintenances
- Reduced installation material, cost and time
- Space-saving cabinets with direct drywall mounting



CGC GROUP

150 Britannia Road East, Unit 1
Mississauga Ontario, Canada
L4Z 2A4

Tel: 905-568-1661

Toll Free: 1-888-220-5551

www.bulldogheatpump.com