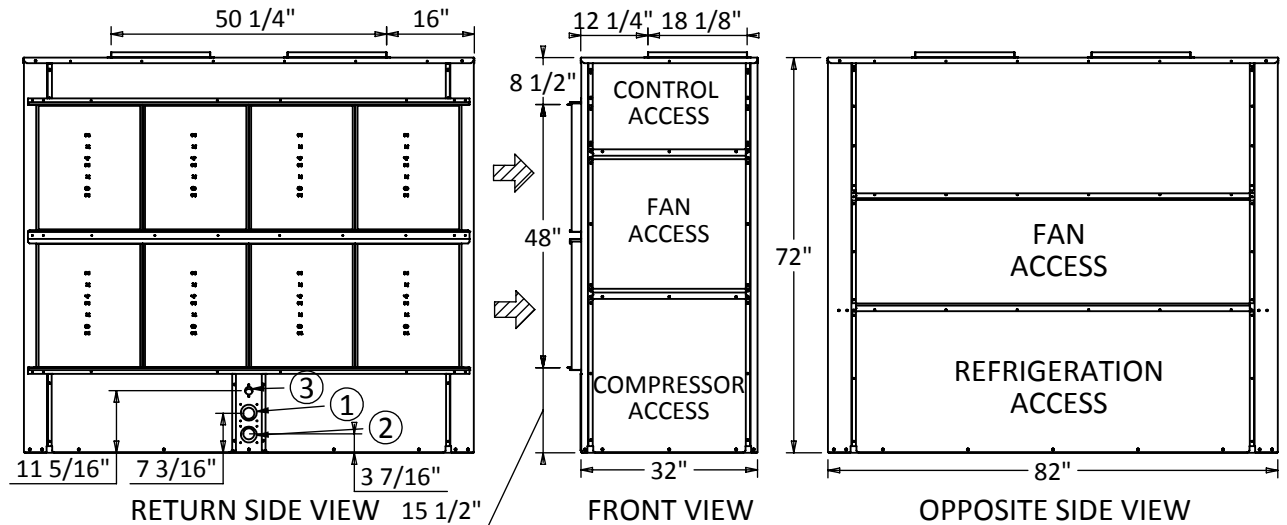


- ① Water Outlet, 2" FPT
- ② Water Inlet, 2" FPT
- ③ Condensate Drain, 3/4" FPT
- ④ High Voltage Access, 7/8"
- ⑤ Low Voltage Access, 7/8"

- REMARKS:
- 1) Pleated disposable filter included. (8-20"x24"x2")
  - 2) Left return, Top Discharge (ARR. 1)
  - 3) Right return, Top Discharge (ARR. 2)
  - 4) Left return, Horizontal Discharge (ARR.3)
  - 5) Right return, Horizontal Discharge (ARR.4)



\* 6" if return is not ducted.

PHYSICAL DATA [in]						MIN. SERVICE CLEARANCE REQUIRED		
W	L	H	SUP. AIR W x H (ID)	RET. AIR W x H	UNIT WT	A	B	C
32	82	72	(2) 18.1 x 18.1	--	1100	30	36	6*

	THE INFORMATION CONTAINED IN THIS DRAWING IS THE SOLE PROPERTY OF CGC GROUP. ANY PRODUCTION IN PART OR AS A WHOLE WITHOUT THE WRITTEN PERMISSION OF CGC GROUP IS PROHIBITED.		
	UNLESS OTHERWISE SPECIFIED:		
	DIMENSIONS ARE IN INCHES TOLERANCES UNLESS OTHERWISE NOTED ARE:		
	FRACTIONAL ± 1/16" ANGULAR ± 0.5° X: ± .1" .XX: ± .06" .XXX: ± .032" .XXXX: ± .0050"		
DRAWN	R.W.B	DATE	08/26/2013
CHECKED	F.A.L	DATE	08/26/2013
ENG APPR.			
REV.	AG	DATE	08/17/2015
Q.A.	F.A.L	DATE	08/17/2015
COMMENTS:			
DO NOT SCALE DRAWING			

DIMENSIONAL DATA			
<b>BULLDOG SpaceKeeper Vertical Heat Pump Models SKV-280 through SKV-320</b>			
SIZE	DWG. NO.	REV.	
A	SKV280-320	A	
SCALE: NTS	WEIGHT:	SHEET 1 OF 1	