

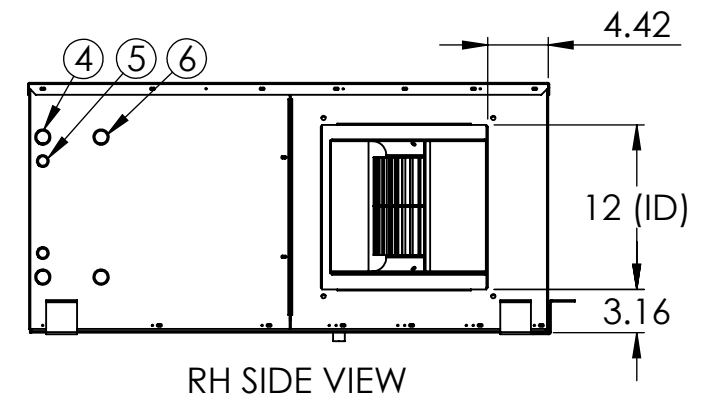
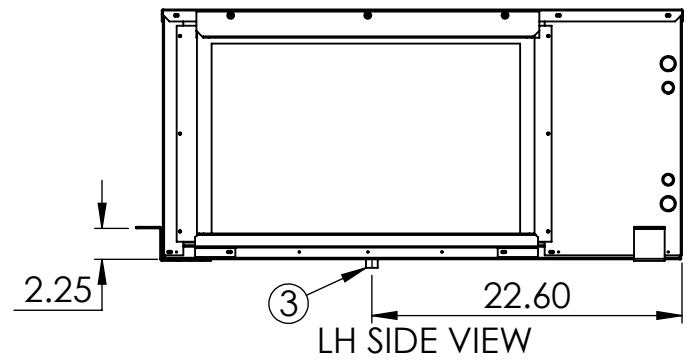
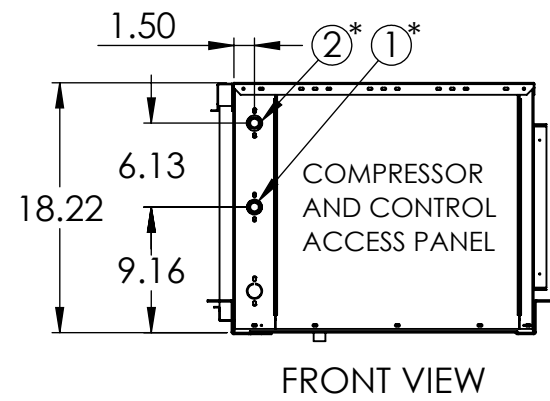
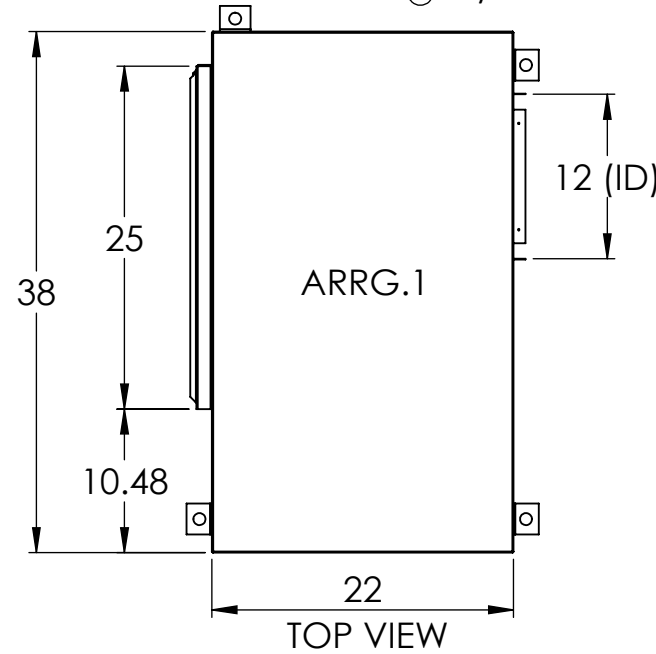
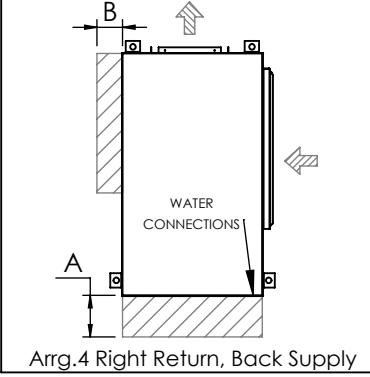
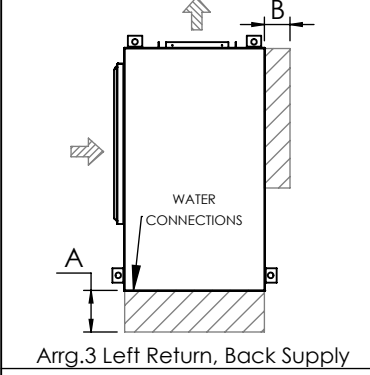
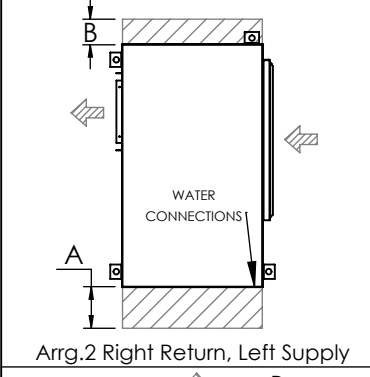
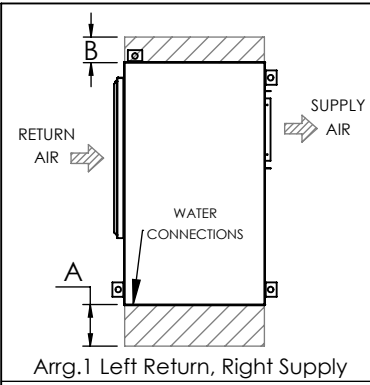
**LEGEND:**



- ① Water Inlet, 1/2" FPT
- ② Water Outlet, 1/2" FPT
- ③ Condensate Drain, 3/4"
- ④ High Voltage Access, 1 1/8" Knockout
- ⑤ Low Voltage Access, 7/8" Knockout
- ⑥ 1 1/8" Knockout for Add on Box

**REMARKS:**

- i) One disposable fiberglass filter included. (25" x 16" x 1")
- ii) Rubber in shear isolation included.
- iii) Arrangement 1 is shown to provide essential dimensions.
- iv) Recommended position for hanging clips is shown.
- v)\* Water connections are positioned on the same side as the return air.



PHYSICAL DATA [in]						MIN. SERVICE CLEARANCE REQUIRED	
W	L	H	SUP. AIR (W x H)	RET. AIR (W x H)	UNIT WT (lbs)	A	B
22	38	18	12 x 12	25 x 14	235	30	18

<p>THE INFORMATION CONTAINED IN THIS DRAWING IS THE SOLE PROPERTY OF CGC Group. ANY REPRODUCTION IN PART OR AS A WHOLE WITHOUT THE WRITTEN PERMISSION OF CGC Group IS PROHIBITED.</p> <p>UNLESS OTHERWISE SPECIFIED: DIMENSIONS ARE IN INCHES</p> <p>CONVERSIONS: UNLESS OTHERWISE NOTED USE: FRACTIONAL: = 1/16" ANGULAR: = 1° XX: = .00" XXX: = .000" XXXX: = .0000"</p>	NAME:	DATE (MM/DD/YYYY):	<b>DIMENSIONAL DATA</b>  BULLDOG SpaceKeeper Horizontal Heat Pump Models SKH-020 through SKH-036  DWG. NO. SKH 020-036 SCALE: NTS WEIGHT: 235 lbs SHEET 1 OF 6
	DRAWN:	7/11/2018	
	CHECKED:	7/11/2018	
	MATERIAL:		
FINISH:			