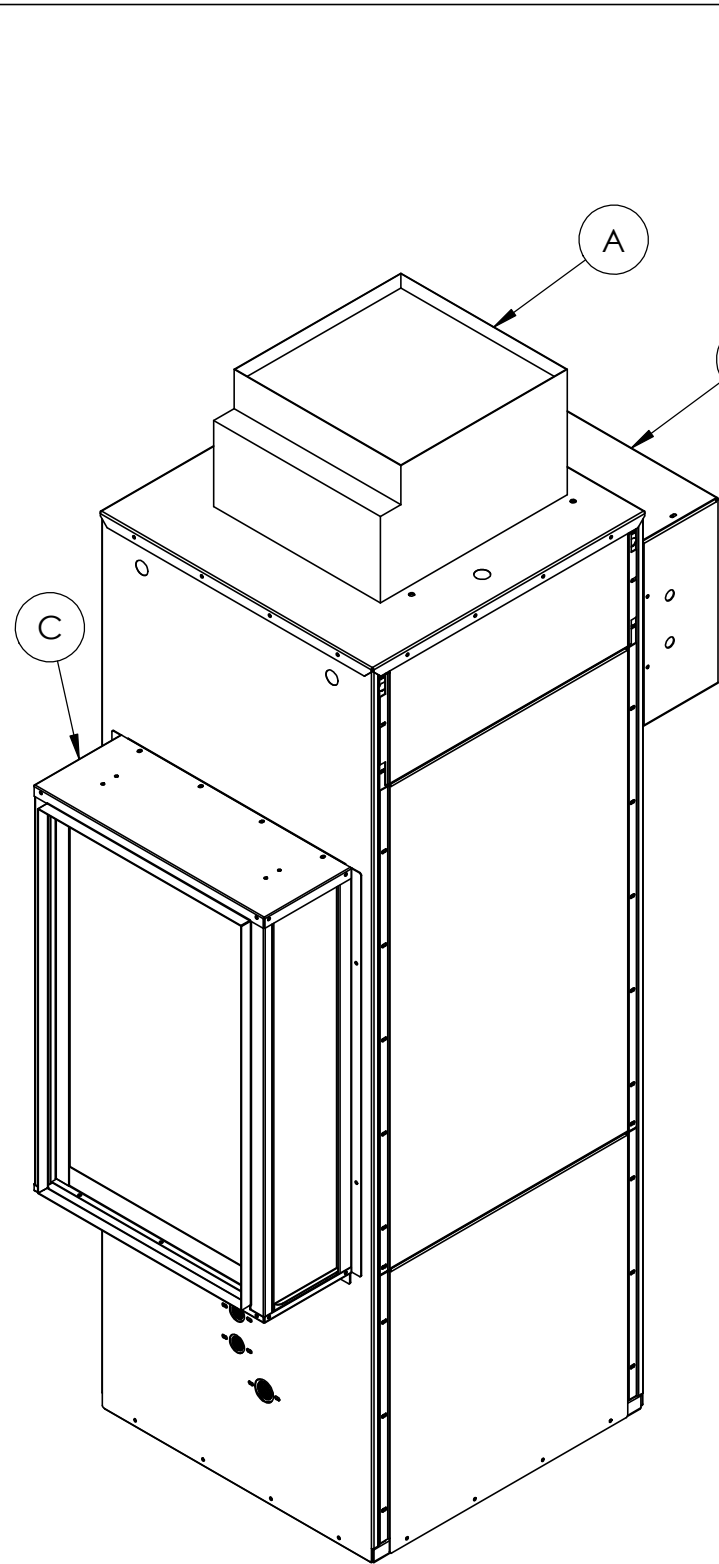


- REMARKS:**
- One Pleated Disposable Filter Included (16" x 25" x 1")
 - Right Side Electrical Access Available
 - Water Piping on Same Side as Filter Access
 - Left Return Unit (ARRG. 1), Right Return Unit (ARRG. 2).
- A - Water Outlet, 1" FPT
 B - Water Inlet, 1" FPT
 C - Condensate Drain, 3/4" FPT
 D - High Voltage Access, 7/8"
 E - Low Voltage Access, 7/8"

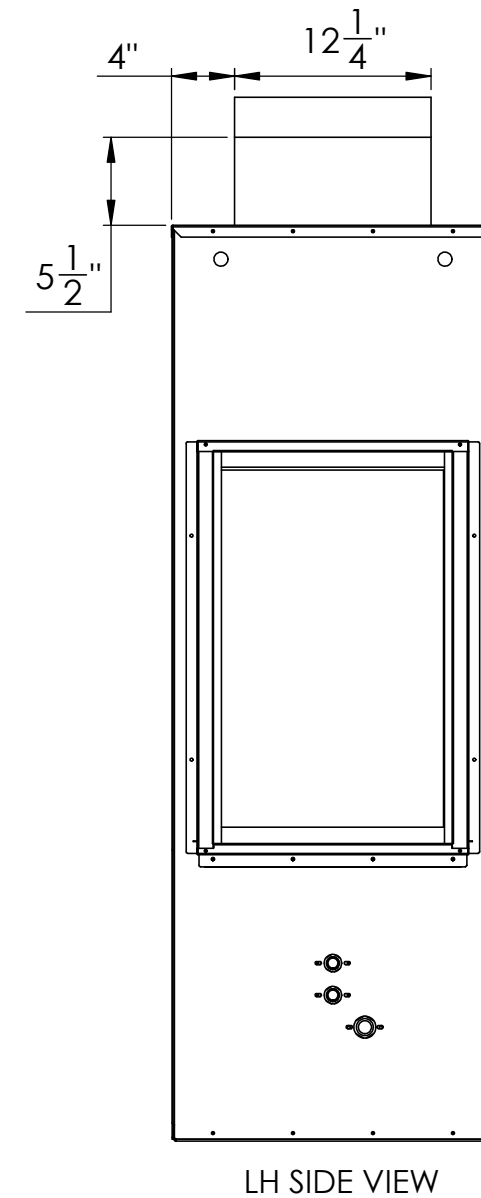
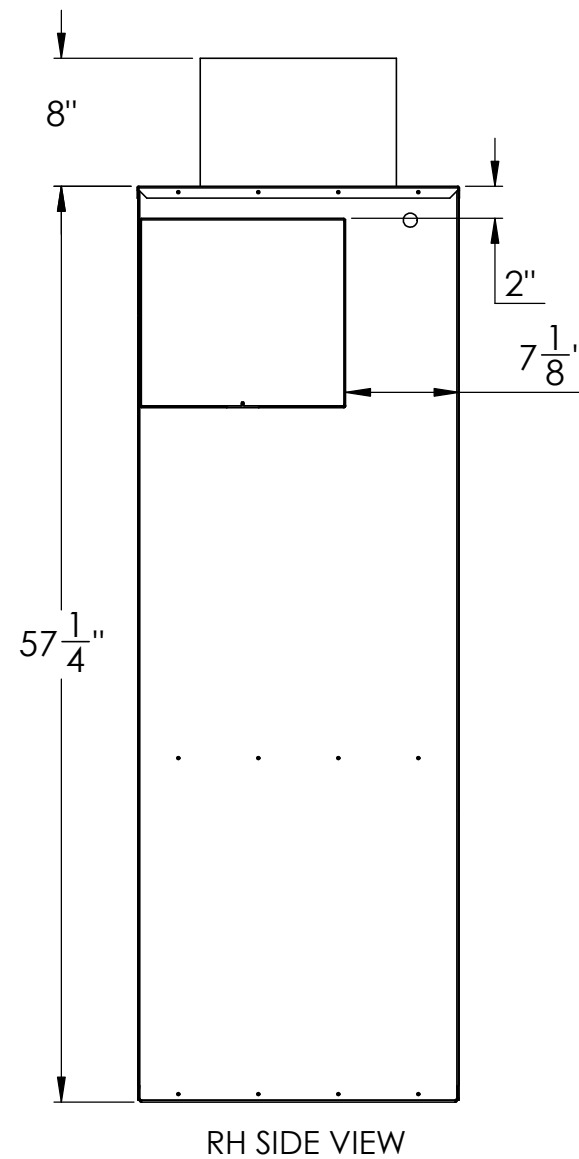
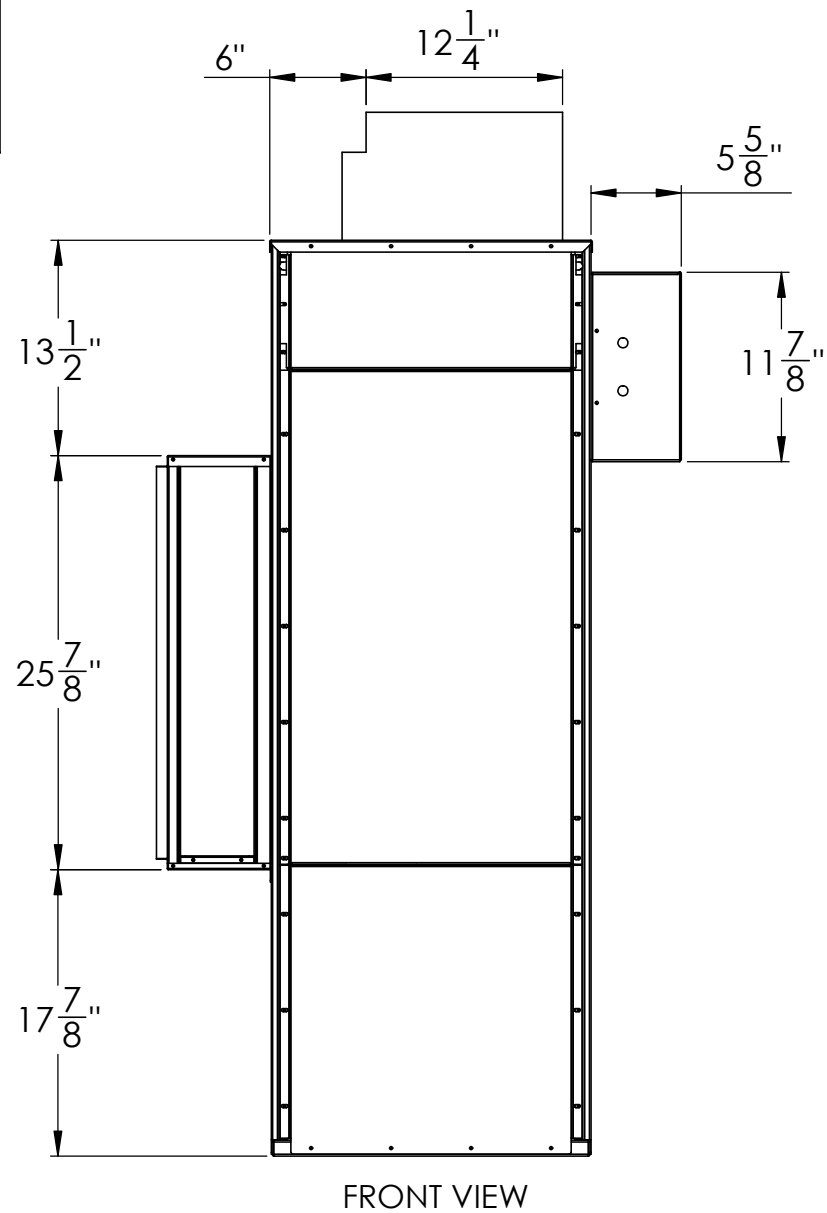
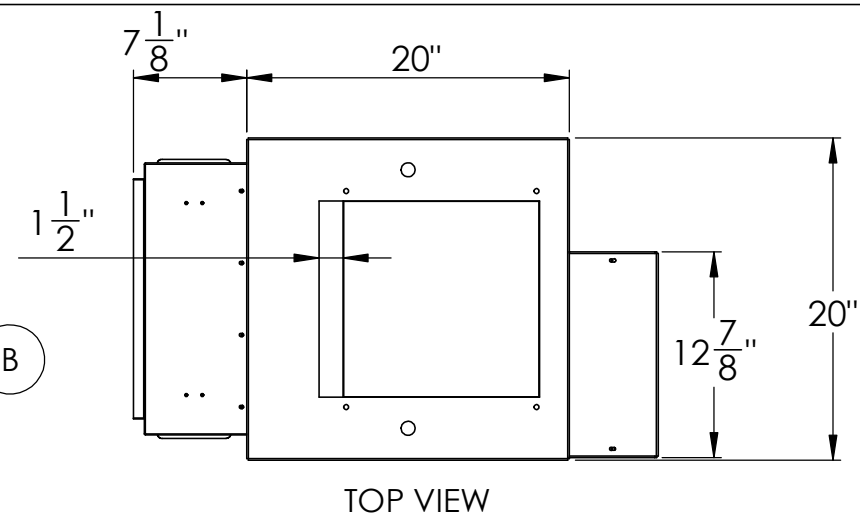
THE INFORMATION CONTAINED IN THIS DRAWING IS THE SOLE PROPERTY OF CGC Group. ANY REPRODUCTION IN PART OR AS A WHOLE WITHOUT THE WRITTEN PERMISSION OF CGC Group IS PROHIBITED.



PAGE: 1 of 3	
PRODUCT FAMILY:	SKV 020-036
PRODUCT REVISION(S):	L
DATE(MM/DD/YYYY):	01/09/2026 REV: A
DESCRIPTION: Standard Submittal Drawing for SpaceKeeper Vertical Stacked Hybrid R454B	



NOTE: Dimensions are typical Between all Arrangements

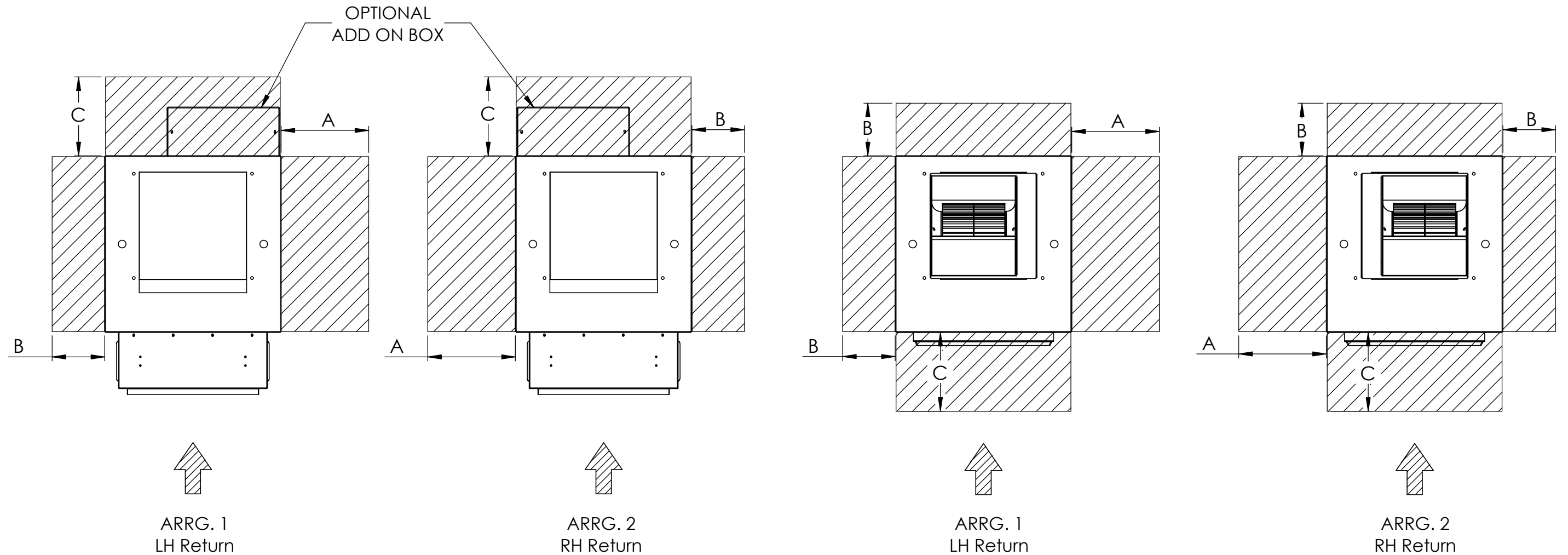


- (A) Optional Electric Heater
- (B) Optional Add on Box
- (C) Optional Filter Box


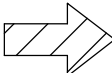
THE INFORMATION CONTAINED IN THIS DRAWING IS THE SOLE PROPERTY OF CGC Group. ANY REPRODUCTION IN PART OR AS A WHOLE WITHOUT THE WRITTEN PERMISSION OF CGC Group IS PROHIBITED.



PAGE: 2 of 3	
PRODUCT FAMILY:	SKV 020-036
PRODUCT REVISION(S):	L
DATE(MM/DD/YYYY):	01/09/2026 REV: A
DESCRIPTION:	Standard Submittal Drawing for SpaceKeeper Vertical Stacked Hybrid R454B



LEGEND:

	= SERVICE CLEARANCE	Clearance Dimensions	
	= DIRECTION OF AIRFLOW	A	30"
		B	18"
		C	20"

THE INFORMATION CONTAINED IN THIS DRAWING IS THE SOLE PROPERTY OF CGC Group. ANY REPRODUCTION IN PART OR AS A WHOLE WITHOUT THE WRITTEN PERMISSION OF CGC Group IS PROHIBITED.



PAGE: 3 of 3	
PRODUCT FAMILY:	SKV 020-036
PRODUCT REVISION(S):	L
DATE(MM/DD/YYYY):	01/09/2026 REV: A
DESCRIPTION:	Standard Submittal Drawing for SpaceKeeper Vertical Stacked Hybrid R454B