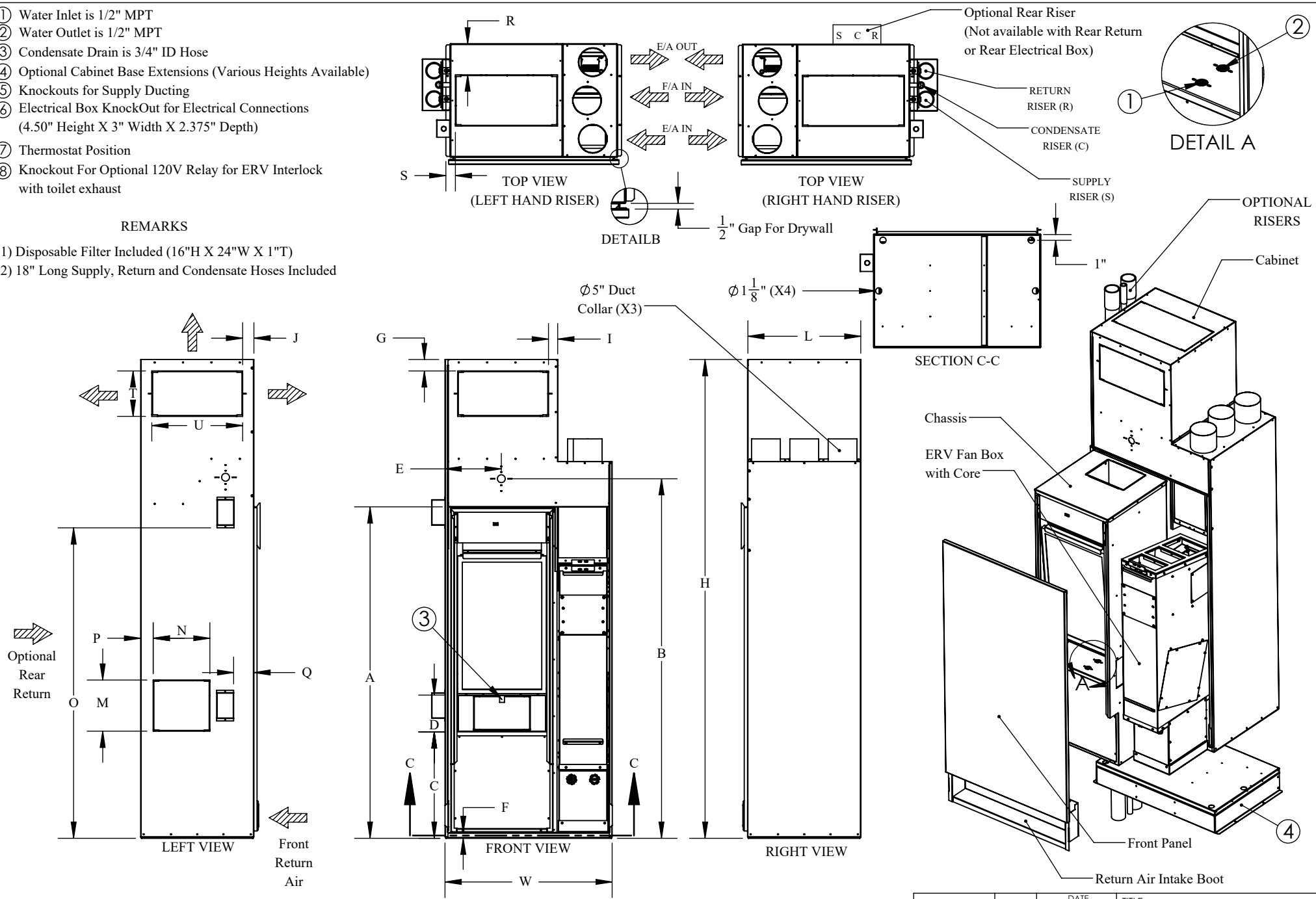


- ① Water Inlet is 1/2" MPT
- ② Water Outlet is 1/2" MPT
- ③ Condensate Drain is 3/4" ID Hose
- ④ Optional Cabinet Base Extensions (Various Heights Available)
- ⑤ Knockouts for Supply Ducting
- ⑥ Electrical Box KnockOut for Electrical Connections (4.50" Height X 3" Width X 2.375" Depth)
- ⑦ Thermostat Position
- ⑧ Knockout For Optional 120V Relay for ERV Interlock with toilet exhaust

REMARKS

- 1) Disposable Filter Included (16"H X 24"W X 1"T)
- 2) 18" Long Supply, Return and Condensate Hoses Included



PHYSICAL DATA (IN)																					
H	W	L	A	B	C	D	E	F	G	I	J	K	M	N	O	P	Q	R	S	T	U
84 3/8"	29 1/2"	20"	58 3/8"	63 3/8"	18 3/4"	6 1/2"	9 7/8"	1"	2"	3 5/8"	2"	18 7/8"	9"	10"	54 3/4"	1 1/2"	3 5/8"	5 1/2"	1 5/8"	8"	16"

	NAME:	DATE (MM/DD/YYYY):	TITLE:
DRAWN BY:	AD	03/21/2022	Bulldog Homekeeper Core ERV Cabinet Dimensional Data
CHECKED BY:	AJM / JVM	03/29/2022	
			UNIT MODEL
<small>THE INFORMATION CONTAINED IN THIS DRAWING IS THE SOLE PROPERTY OF CGC GROUP. ANY REPRODUCTION IN PART OR AS A WHOLE WITHOUT THE WRITTEN PERMISSION OF CGC GROUP IS PROHIBITED.</small>			HKEC 016-030
<small>PROPRIETARY AND CONFIDENTIAL</small>			SCALE: NTS
			SHEET 1 OF 1