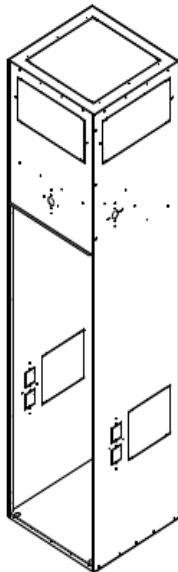
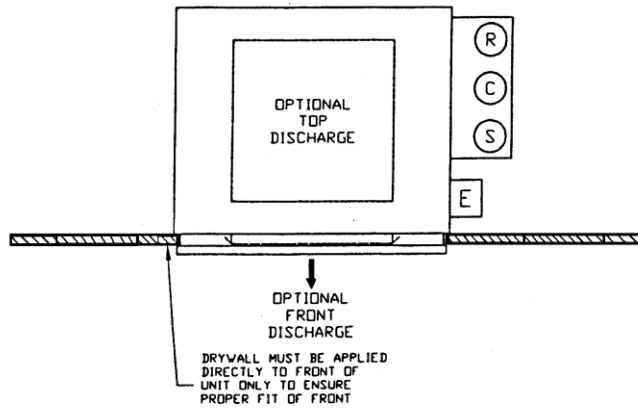


## BULLDOG Vertical Stacked Units- Cabinet Selection Guide

### “Standard Cabinet vs. Compact Cabinet”

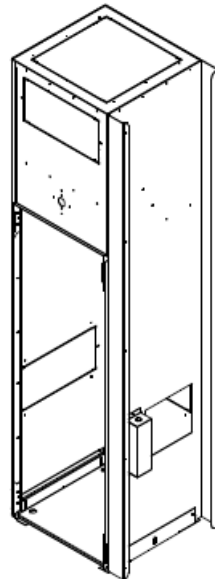
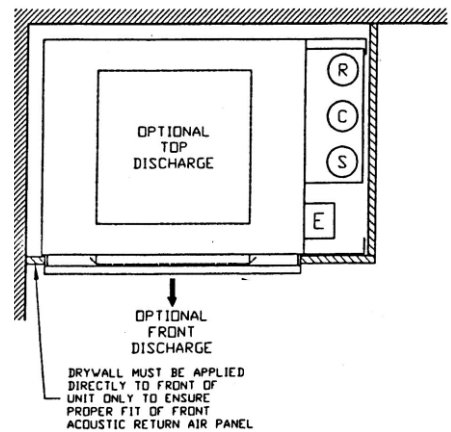
CGC Group Vertical Stack Units (InnKeeper and HomeKeeper) are available as a standard or (OPTIONAL) Compact Cabinet. Each of these specific kinds of cabinets has situations where one is preferable over the other. The standard cabinet has the capability to fit in most situations when looking at the placement of the unit. The Compact unit is able to fit into smaller more confined spaces. As shown below the standard cabinet is able to fit in most situations, where the compact cabinet is used for corners and/or spaces where the wings act as steel studs for direct mounting of Drywall.

#### Standard Cabinet



- No need to determine left or right handedness for ordering
- Rear Riser Position available
- Not available with leveling legs
- Rear return available

#### (Optional) Compact Cabinet



- “Compact” smaller footprint
- Leveling legs standard
- Handling required, a left or right handed unit must be selected
- Rear riser position not available

